

## TRAIL DESCRIPTION

For more trail information contact:  
Kootenai National Forest  
Libby Ranger District 406-293-7773



### Trapper Creek Trail # 297 3.1 Miles

**Recommended Season**  
Summer Fall

**ACCESS:** From Libby, head south on US Highway 2 for 28 miles and take the Silver Butte Road. Proceed up Silver Butte for 7.5 miles to Trapper Creek and the trailhead.

**FACILITIES:** None. Good trailer turn around and parking off the Silver Butte Rd just past Trapper Creek and the Trailhead.

**SETTING:** Closed canopy forest for the first 2 miles and open and young forest stands through the industrial timber section.

**OPPORTUNITIES:** Hiking, viewing scenery, horseback riding, and hunting.

**ATTRACTIONS & CONSIDERATIONS:** The main attraction for this trail is access to the Divide Trail 6S and the loop opportunities this provides. There are few scenic views until you get to the private section at the saddle and the Divide Trail. The highest use loop opportunities include Trapper Creek Trail to the Olson Creek Trail, Porcupine Ridge Trail, and Iron Meadows Trails. This is the easiest access trail to the Divide Trail 6S.

**TRAIL INFORMATION:** Trail is in good condition for the first two miles but is non-existent through most of the private section. Most users utilize the closed forest roads for the last mile to tie in with the Divide Trail #6S. Locating the trail off this road can be difficult and needs some trail markers to make it easier for users.

**ELEVATION:** Beginning at 3400 at the Silver Butte Road and ending at 4400 at the junction with the Divide Trail 6S.

**USE:** Moderate

**DIFFCULTY:** Moderate

**MAINTENANCE:** Cleared by Cabinet Back Country Horsemen every 1-2 years.

**Current Status -**

[www.fs.usda.gov/activity/kootenai/recreation/hiking](http://www.fs.usda.gov/activity/kootenai/recreation/hiking)

**MAPS:** Forest Map, District Travel Map

**CLOSURES:** All motorized use



*Trailhead*



*Trapper Creek*

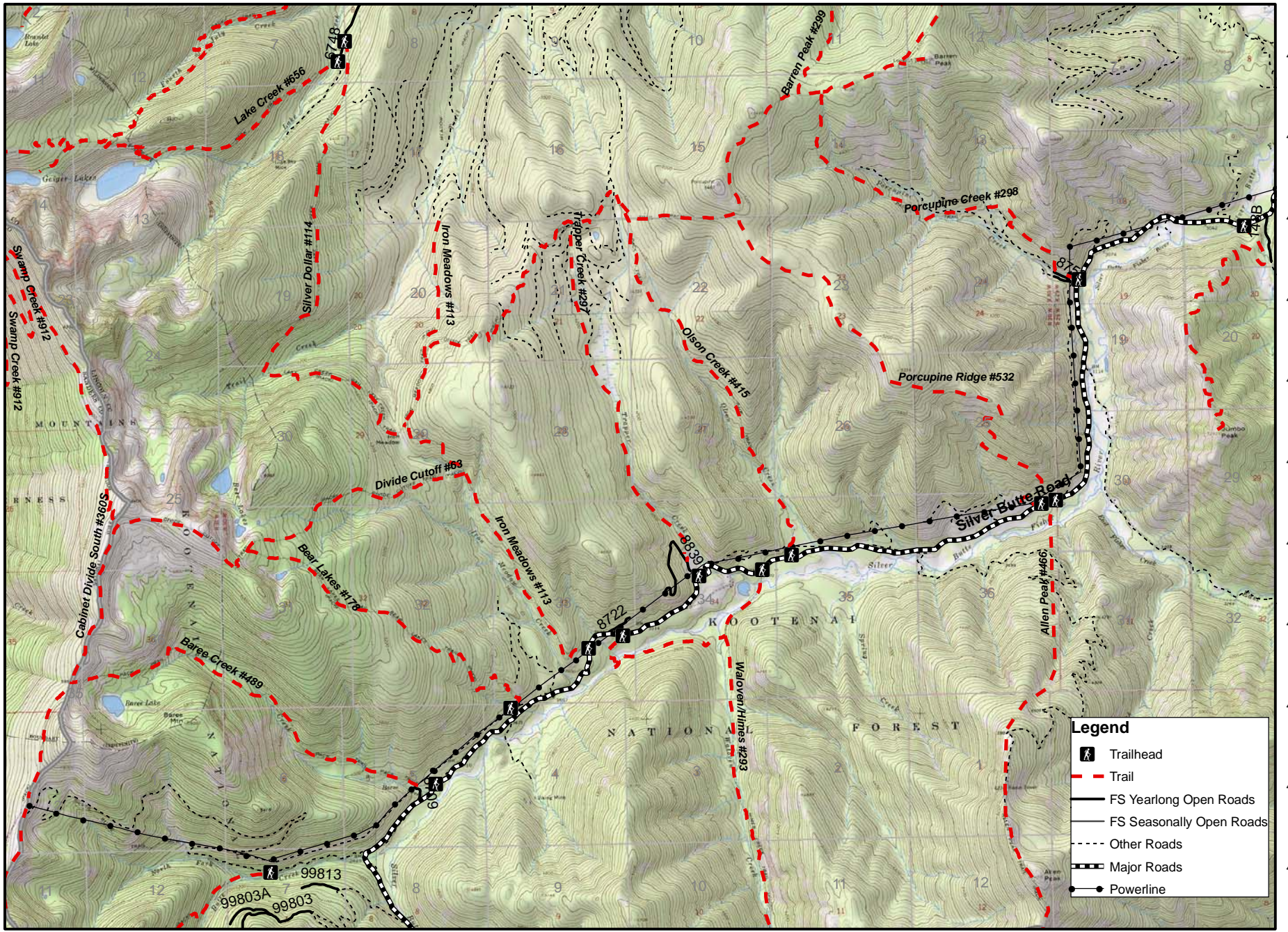
*Prepared by Cabinet Back Country Horsemen*

# Silver Butte North Trails

115 33°0'W 115 32°0'W 115 31°0'W 115 30°0'W 115 29°0'W 115 28°0'W 115 27°0'W 115 26°0'W 115 25°0'W 115 24°0'W 115 23°0'W 115 22°0'W

48 1°30'N  
48 1°0'N  
48 0°30'N  
48 0°0'N  
47 59°30'N  
47 59°0'N  
47 58°30'N  
47 58°0'N  
47 57°30'N  
47 57°0'N  
47 56°30'N

48 1°30'N  
48 1°0'N  
48 0°30'N  
48 0°0'N  
47 59°30'N  
47 59°0'N  
47 58°30'N  
47 58°0'N  
47 57°30'N  
47 57°0'N  
47 56°30'N



**Legend**

- Trailhead
- Trail
- FS Yearlong Open Roads
- FS Seasonally Open Roads
- Other Roads
- Major Roads
- Powerline

115 33°0'W 115 32°0'W 115 31°0'W 115 30°0'W 115 29°0'W 115 28°0'W 115 27°0'W 115 26°0'W 115 25°0'W 115 24°0'W 115 23°0'W 115 22°0'W

