



TRAIL DESCRIPTION

For more trail information contact:
Kootenai National Forest
Libby Ranger District 406-293-7773



Silver Dollar # 114 4.2 Miles

Recommended Season
Summer Fall

ACCESS: From Libby, travel 26 miles south on US Highway 2. Turn right (west) on to the West Fisher Road #231 and continue for 6 miles to Geiger Lakes Road #6748 that forks to the left; travel 1.5 miles to the trailhead.

FACILITIES: Trailhead has limited parking and small turn around radius for trailers. Stock users are encouraged to park and unload at the junction of the 6748 road as there may be no turn around options if other vehicles are parked at the trailhead.

SETTING: The majority of this trail traverses through closed forests of primarily lodgepole pine, with a few scattered openings. There are pockets of mixed forest in Trail Creek and on the north slopes as it crosses into Iron Meadows.

OPPORTUNITIES: Hiking, horseback riding, and hunting.

ATTRACTIONS & CONSIDERATIONS: This trail provides access to the Iron Meadows Trail #113, the Divide Trail 6S, and the Divide Cutoff Trail #63 to the Cabinet Wilderness. There are several loop opportunities once you get to Iron Meadows and the Divide Trail. A common loop from Silver Dollar is to head north on the Iron Meadows Trail to the 2314 Road System, down Trail Creek and back to the West Fisher Road.

TRAIL INFORMATION: This trail is maintained for hikers and stock and has a fairly gentle grade compared to most trails in the area.

After the first mile, the trail follows a rehabilitated logging road before entering the timber again. The beginning 1/3 of the trail is through a managed landscape, the next 2/3 traverses into the head end of Trail Creek and a Roadless Area. There is a short section that descends fairly steeply to Trail Creek and climbs steeply out of Trail Creek.

ELEVATION: Beginning at about 3650' at the Geiger Lake Road 6748 and ending at 4600' at the junction with the Iron Meadows Trail # 113.

TRAIL USE: Moderate
DIFFCULTY: Moderate

MAINTENANCE: Periodically . Cleared by Cabinet Back Country Horsemen every 2-3 years.

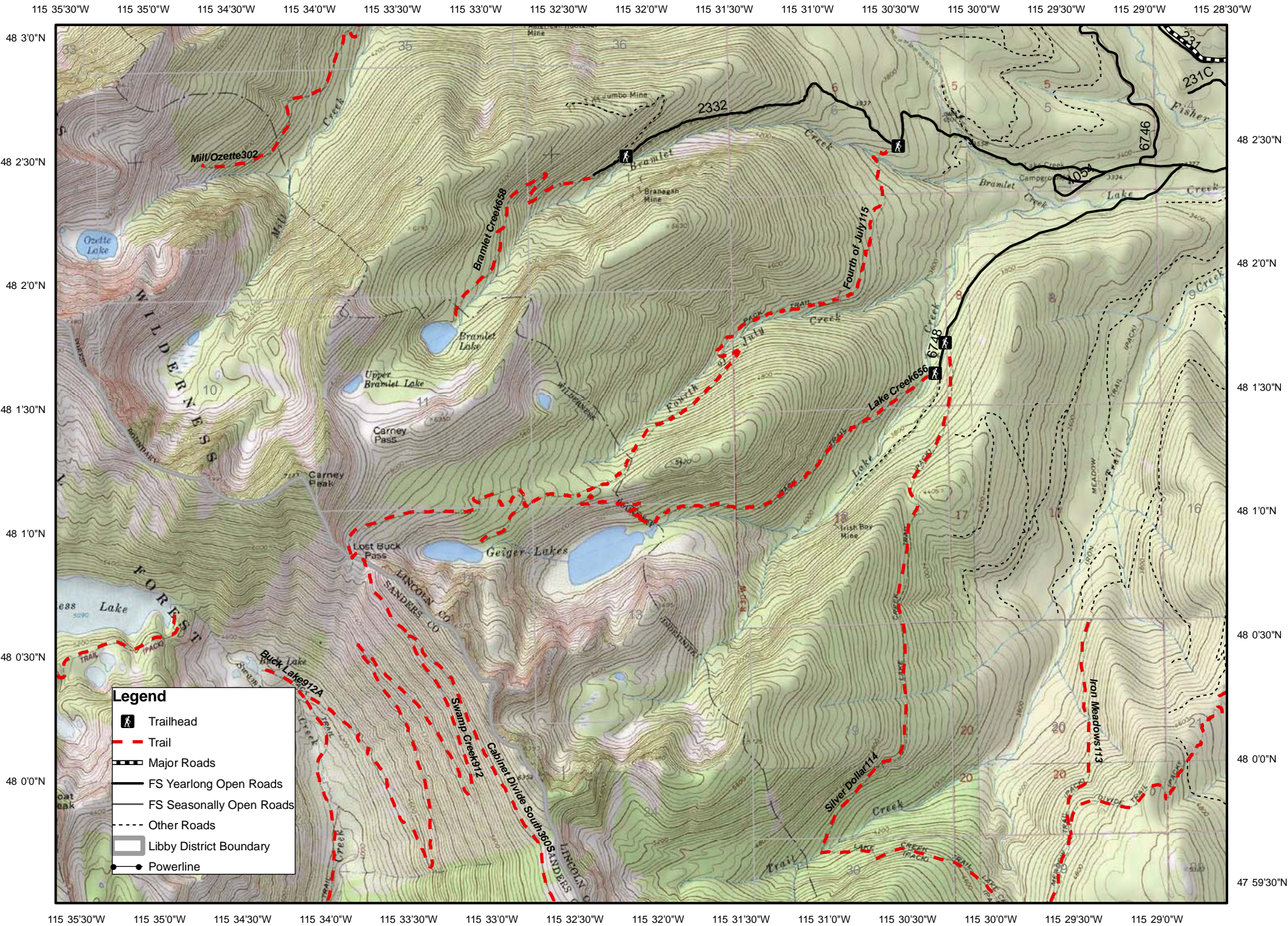
Current Status -
www.fs.usda.gov/activity/kootenai/recreation/hiking

MAPS: Forest Map, District Travel Map
CLOSURES: All motorized use



Silver Dollar Trail

Lake Cr. #656, Upper Geiger #656A, 4th of July #115 and Bramlet #658



115 35'30"W 115 35'0"W 115 34'30"W 115 34'0"W 115 33'30"W 115 33'0"W 115 32'30"W 115 32'0"W 115 31'30"W 115 31'0"W 115 30'30"W 115 30'0"W 115 29'30"W 115 29'0"W 115 28'30"W

