

## TRAIL DESCRIPTION

For more trail information contact:  
Kootenai National Forest  
Libby Ranger District 406-293-7773



## Porcupine Ridge Trail # 532 4 Miles

Recommended Season  
Summer Fall

**ACCESS:** From Libby, head south on US Highway 2 for 28 miles to the Silver Butte Road. Head up the Silver Butte Road for about 5.5 miles and take the powerline road to the right. The trail starts just above the powerline. This trail is also accessed from the Divide Trail 6S.

**FACILITIES:** None. Tight turn around under the powerline for stock trailers.

**SETTING:** Diverse setting from closed forest canopy, open young forest and open forest on the ridge.

**OPPORTUNITIES:** Hiking, viewing scenery, horseback riding, and hunting.

### ATTRACTIONS &

**CONSIDERATIONS:** The main attraction for this trail is the stunning views of the Cabinet Mountains and access to the Divide Trail 6S. Access to the Divide Trail provides several loop opportunities.

**TRAIL INFORMATION:** The first 1.5 miles of this trail is extremely steep and can be difficult for stock as well as hikers. Elevation gain on this section is about 2000 feet. The tread is poor through the open sections of this trail and following the trail can be difficult on the open ridge. Once you are on the ridge in the timber, the trail is in great condition and has a gentle grade to the divide.

If you access Trail 532 from the Divide Trail 6S and do not go down to the Silver Butte Road, it is an excellent stock trail.

**ELEVATION:** Beginning at 3400 feet at the powerline and ending at 5200 feet just below Porcupine Mountain.

**USE:** Moderate

**DIFFCULTY:** Difficult

**MAINTENANCE:** Cleared every year or two by Cabinet Back Country Horsemen.

**Current Status -**  
[www.fs.usda.gov/activity/kootenai/recreation/hiking](http://www.fs.usda.gov/activity/kootenai/recreation/hiking)

**MAPS:** Forest Map, District Travel Map

**CLOSURES:** All motorized use



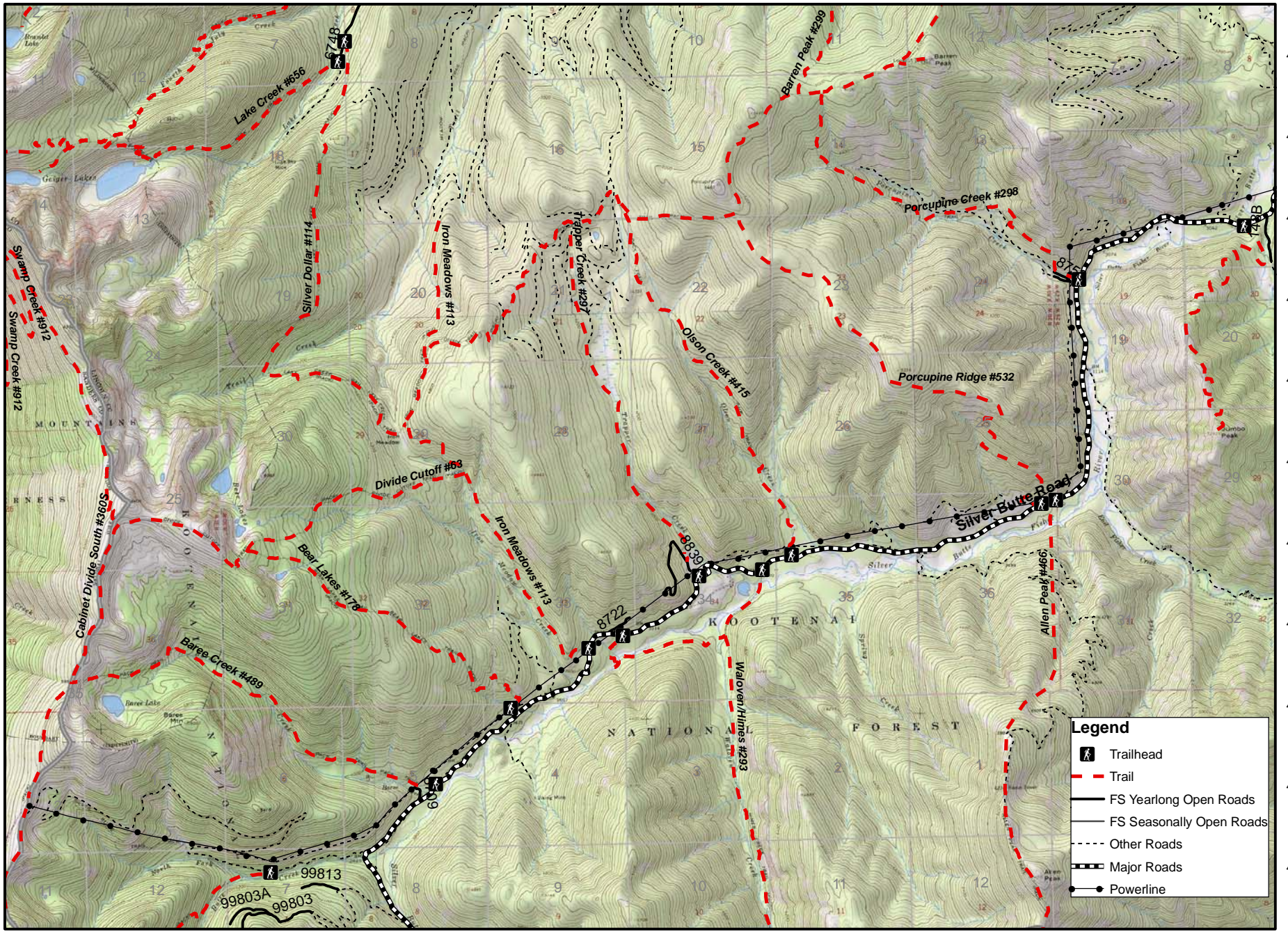
*Porcupine Ridge Trail*

# Silver Butte North Trails

115 33°0'W 115 32°0'W 115 31°0'W 115 30°0'W 115 29°0'W 115 28°0'W 115 27°0'W 115 26°0'W 115 25°0'W 115 24°0'W 115 23°0'W 115 22°0'W

48 1°30'N  
48 1°0'N  
48 0°30'N  
48 0°0'N  
47 59°30'N  
47 59°0'N  
47 58°30'N  
47 58°0'N  
47 57°30'N  
47 57°0'N  
47 56°30'N

48 1°30'N  
48 1°0'N  
48 0°30'N  
48 0°0'N  
47 59°30'N  
47 59°0'N  
47 58°30'N  
47 58°0'N  
47 57°30'N  
47 57°0'N  
47 56°30'N



**Legend**

- Trailhead
- Trail
- FS Yearlong Open Roads
- FS Seasonally Open Roads
- Other Roads
- Major Roads
- Powerline

115 33°0'W 115 32°0'W 115 31°0'W 115 30°0'W 115 29°0'W 115 28°0'W 115 27°0'W 115 26°0'W 115 25°0'W 115 24°0'W 115 23°0'W 115 22°0'W

