



Cabinet  
Back Country Horsemen

## CAMPSITE DESCRIPTION

For more information contact:  
Kootenai National Forest  
Libby Ranger District 406-293-7773

## Oscar Miller Dispersed Campsite



Recommended Season  
Yearlong

**ACCESS:** From Libby, head south on US Highway 2 for 25 miles ( mile marker 57), and take the West Fisher Road on the right. Proceed up the West Fisher for 5.5 miles and turn right into the site. There is a small sign at the entrance.

**FACILITIES:** Vault Toilet, Hitch Rail, Loading Ramp. Pack it in Pack it out site on about 15 acres with 10-12 dispersed campsites that vary from small camper or tent sites to sites large enough for living quarter's horse trailers. Sites on the east side are accessed by a rough 2-track road and a high clearance vehicle is necessary.

**SETTING:** The site is within an old homestead. Closed forest dominates the area, with intermixed grassy openings. The West Fisher River parallels the northern boundary.

**OPPORTUNITIES:** Dispersed campsite for hikers, horsemen, hunters, fisherman, ATV and Snowmobilers. Easy access to over 50 miles of trail within and adjacent to the Cabinet Mountain Wilderness. The access road is not plowed in the winter, but the site is available for use yearlong.

**USE INFORMATION:** No potable water, but easy access to water from the West Fisher River. First come, First serve, No Fee's, 14 day stay limit.

**Bears frequent the area. Mandatory food storage is required.**

**ELEVATION:** 3200 feet

**USE:** Moderate



*Camp Site Map*



*Large Opening & Vault Toilet*

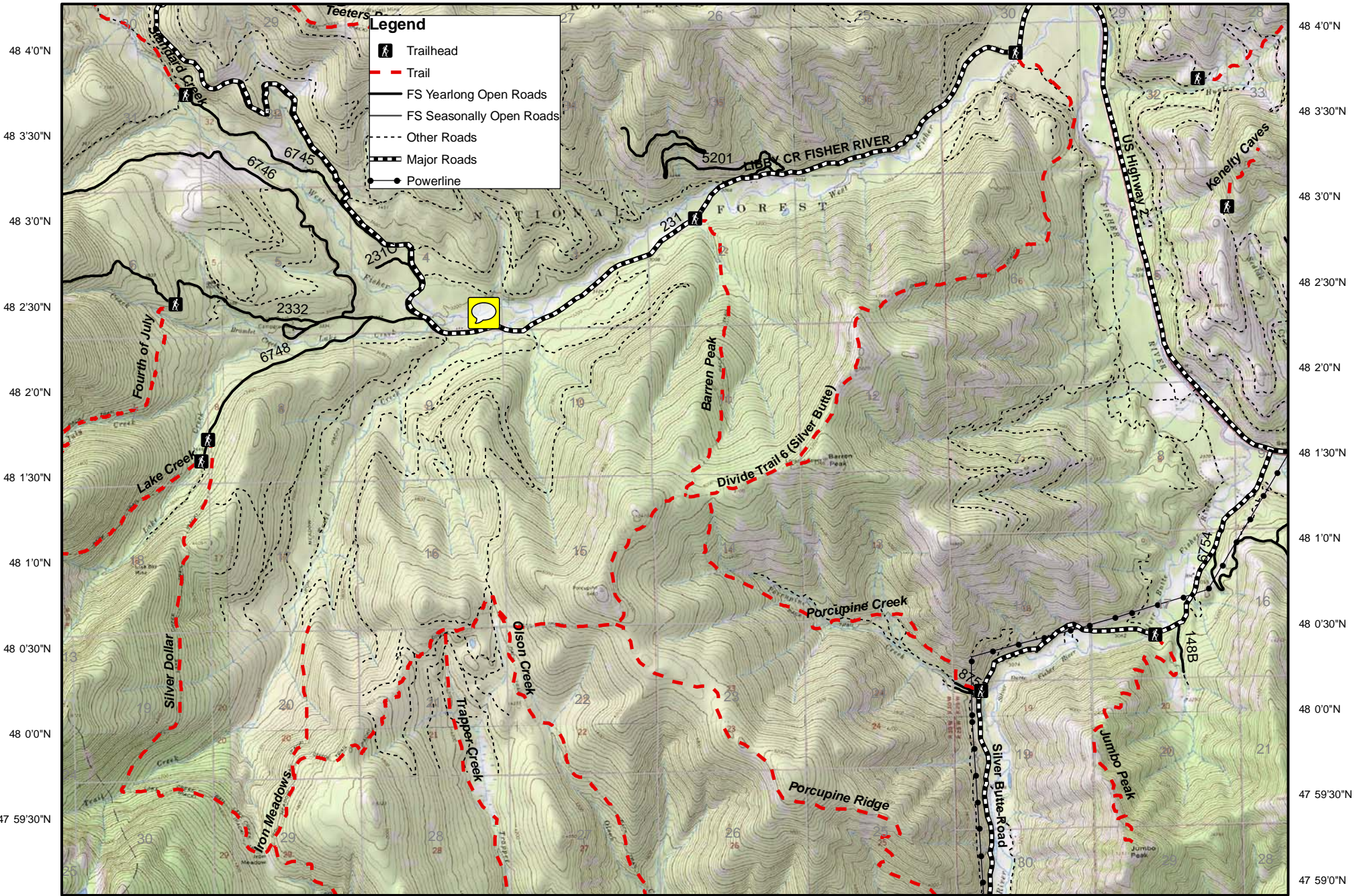


*West Fisher River*

*Prepared by Cabinet Back Country Horsemen*

# Barren Peak Trail #299, Divide Trail 6, Silver Dollar Trail #114

115 31'0"W 115 30'0"W 115 29'0"W 115 28'0"W 115 27'0"W 115 26'0"W 115 25'0"W 115 24'0"W 115 23'0"W 115 22'0"W 115 21'0"W



**Legend**

- Trailhead
- Trail
- FS Yearlong Open Roads
- FS Seasonally Open Roads
- Major Roads
- Powerline

115 31'30"W 115 30'30"W 115 29'30"W 115 28'30"W 115 27'30"W 115 26'30"W 115 25'30"W 115 24'30"W 115 23'30"W 115 22'30"W 115 21'30"W

