

TRAIL DESCRIPTION

For more trail information contact:
Kootenai National Forest
Libby Ranger District 406-293-7773



Olson Creek Trail # 415 3.4 Miles

Recommended Season
Summer Fall

ACCESS: From Libby, head south on US Highway 2 for 28 miles and take the Silver Butte Road. Proceed up Silver Butte for 7 miles to a small harvest unit and the trailhead sign.

FACILITIES: None, trailer turnaround in harvest unit just before the trailhead.

SETTING: Closed Canopy Forest of lodgepole pine in the lower 2 miles and old growth forest in the upper 1.5 miles.

OPPORTUNITIES: Hiking, viewing scenery, horseback riding, and hunting.

ATTRACTIONS & CONSIDERATIONS: The main attraction for this trail is access to the Divide Trail 6S and the loop opportunities this provides. Very few scenic views until you get to the Divide Trail. The highest use loop opportunities include Olson to Trapper Creek Trail, Porcupine Ridge Trail, and Iron Meadows Trails.

TRAIL INFORMATION: The majority of this trail is in good condition for horse and hiker use. There are sections in the upper mile that can be wet early in the season. This is one of the easiest grade trails that access the Divide Trail 6S.

The trail is a commonly used hunting access trail.

ELEVATION: Beginning at 3300 feet at the Silver Butte Road and ending at 4400 feet on the Divide Trail.

USE: Moderate

DIFFCULTY: Moderate

MAINTENANCE: Yearly – Cleared by Cabinet Back Country Horsemen.

Current Status -

www.fs.usda.gov/activity/kootenai/recreation/hiking

MAPS: Forest Map, District Travel Map

CLOSURES: All motorized use



Old Growth Forest



Wapiti Flats

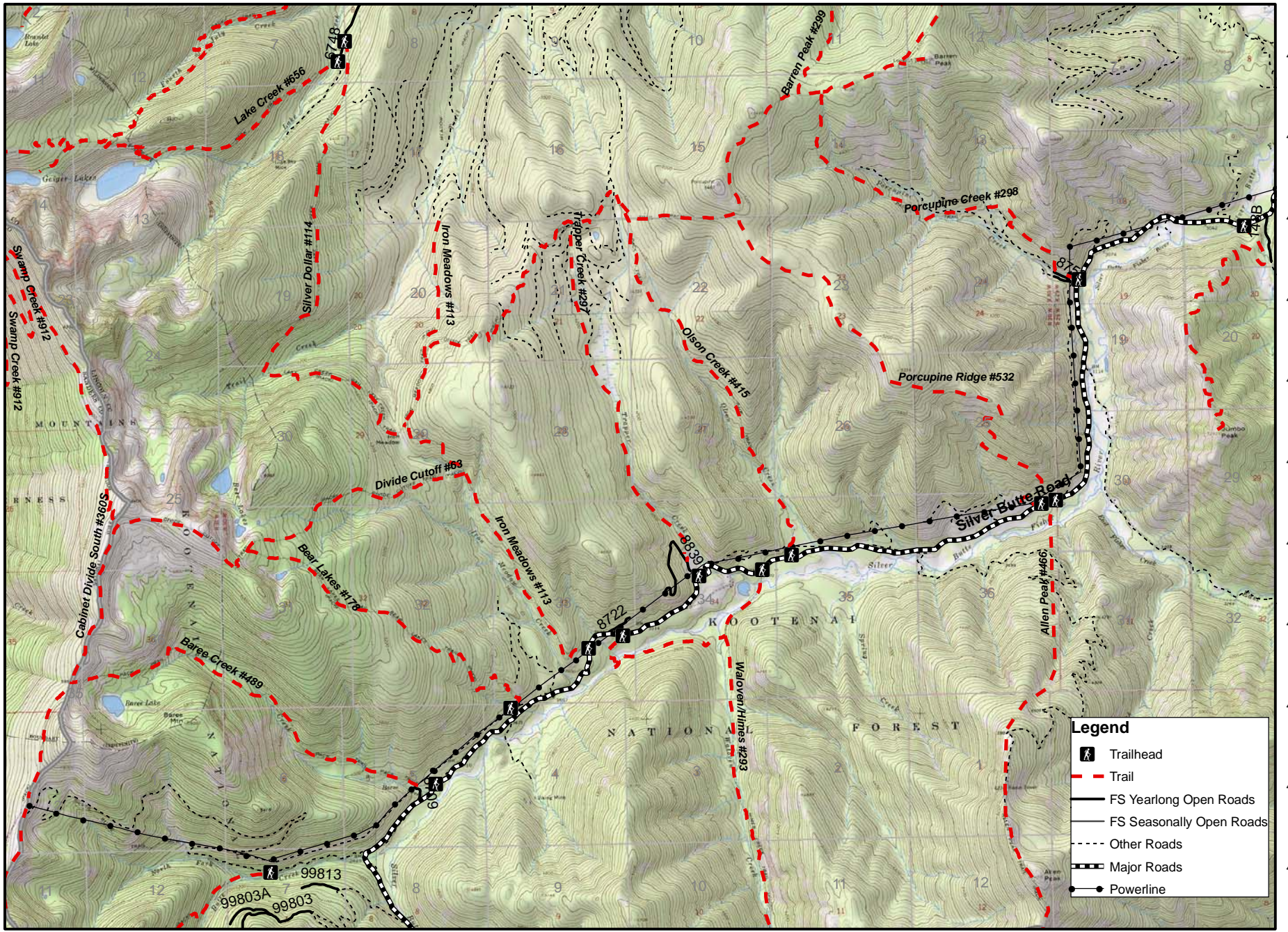
Prepared by Cabinet Back Country Horsemen

Silver Butte North Trails

115 33°0'W 115 32°0'W 115 31°0'W 115 30°0'W 115 29°0'W 115 28°0'W 115 27°0'W 115 26°0'W 115 25°0'W 115 24°0'W 115 23°0'W 115 22°0'W

48 1°30'N
48 1°0'N
48 0°30'N
48 0°0'N
47 59°30'N
47 59°0'N
47 58°30'N
47 58°0'N
47 57°30'N
47 57°0'N
47 56°30'N

48 1°30'N
48 1°0'N
48 0°30'N
48 0°0'N
47 59°30'N
47 59°0'N
47 58°30'N
47 58°0'N
47 57°30'N
47 57°0'N
47 56°30'N



Legend

- Trailhead
- Trail
- FS Yearlong Open Roads
- FS Seasonally Open Roads
- Other Roads
- Major Roads
- Powerline

115 33°0'W 115 32°0'W 115 31°0'W 115 30°0'W 115 29°0'W 115 28°0'W 115 27°0'W 115 26°0'W 115 25°0'W 115 24°0'W 115 23°0'W 115 22°0'W

