

TRAIL DESCRIPTION

For more trail information contact:
Kootenai National Forest
Libby Ranger District 406-293-7773



NF Miller Creek Trail # 505 3.2 Miles

Recommended Season

Spring Summer Fall

ACCESS: From Libby, travel south on US Highway 2 for about 25 miles. Turn right onto Miller Creek Road # 385 at about the 56 mile marker and follow for 3.2 miles to the junction with road #385 and road # 4725. The first half of the trail is on the closed 4725 road.

The upper trailhead can be accessed off the Libby Divide Trail.

For other access into Miller Creek, see the Miller Ridge Trail # 506, the South Fork Miller Creek Trail # 118, and Horse Mountain/Libby Divide # 716.

FACILITIES: None, park at the junction of the 385 and 4725 Road.

SETTING: Conifer forest, both continuous and mosaic with openings, on steep mountain slopes in the Miller Creek drainage. The section along the road traverses through open southerly aspects, and showcases some beautiful large ponderosa pine types. The section through the drainage is through closed forest with a fair amount of dead standing and down trees. There are nice views of the Cabinet Mountain Wilderness once you get to the main ridge.

OPPORTUNITIES: Hiking, horseback riding, mountain biking, viewing scenery, and hunting.

ATTRACTIONS & CONSIDERATIONS: This trail access's the Libby Divide/Horse Mountain Trail System and makes a nice day hike. Also provides excellent hiking or horseback loops that tie in with the Libby Divide trail, the Miller Ridge trail and the NF Miller Creek Trail. Beautiful fall colors as the larch turn.

This trail is commonly used for hunting access.

TRAIL INFORMATION: Trail is rarely maintained, so expect downfall for about a mile once you leave the 4725 road to the next road. Trail is generally in good condition from the upper road to the Libby Divide Trail.

ELEVATION: Beginning at 3100' and ending at 4500' on the Libby Divide Trail.

USE: Light

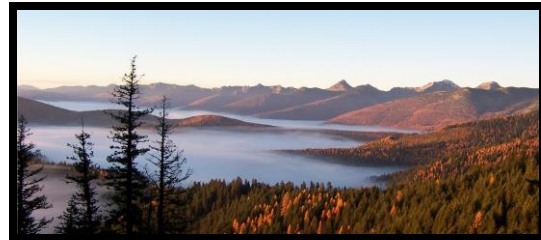
DIFFICULTY: Moderate

MAINTENANCE: Periodically **Current Status**

- www.fs.usda.gov/activity/kootenai/recreation/hiking

MAPS: District Map

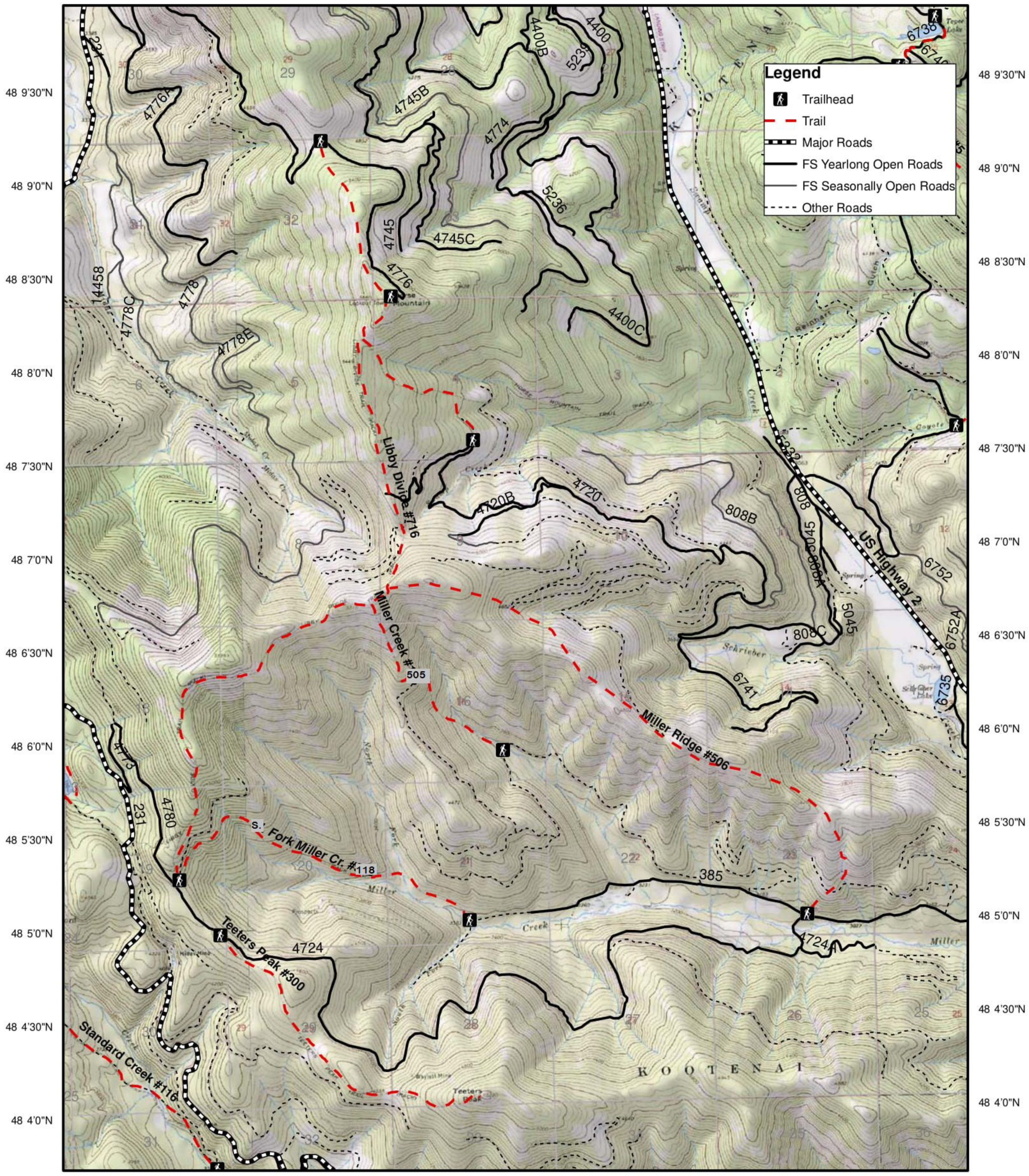
CLOSURES: Restricted to motorized use



Upper Trailhead at Libby Divide

Swamp Cr. #121, Libby Divide #716, Teeters Pk. #300, Miller Cr. #118, 505 & 506

115 31'0"W 115 30'0"W 115 29'0"W 115 28'0"W 115 27'0"W 115 26'0"W 115 25'0"W



115 31'30"W 115 30'30"W 115 29'30"W 115 28'30"W 115 27'30"W 115 26'30"W 115 25'30"W 115 24'30"W