

TRAIL DESCRIPTION

For more trail information contact:
Kootenai National Forest
Libby Ranger District 406-293-7773



Miller Ridge Trail # 506 4.7 Miles

Recommended Season

Spring Summer Fall

ACCESS: From Libby, travel south on US Highway 2 for about 25 miles. Turn right onto Miller Creek Road # 385 at about mile marker 56 and follow for 2.5 miles to the junction with road #385 and road # 4724.

The upper portion of the trail can be accessed off the Libby Divide Trail.

For other access into Miller Creek, see the NF Miller Creek Trail # 505, the South Fork Miller Creek Trail # 118, and Horse Mountain/Libby Divide # 716.

FACILITIES: None, park at the junction of the 385 and 4724 Road.

SETTING: Conifer forest, both continuous and mosaic with openings, mostly on a relatively gentle ridge on the north side of the Miller Creek drainage. Much of the ridgeline trail traverses through open southerly aspects, and showcases some beautiful large ponderosa pine types. There are nice views of the Cabinet Mountain Wilderness and the Miller Creek drainage once you get to the main ridge.

OPPORTUNITIES: Hiking, horseback riding, viewing scenery, and hunting.

ATTRACTIONS & CONSIDERATIONS:

This trail access's the Libby Divide/Horse Mountain Trail System, and provides a nice 9 mile hiking or horseback loop up the Miller Ridge Trail to a ¼ mile section on the Libby Divide Trail, and down the North Fork Miller Creek Trail. Hint – hike up the NF Miller Trail and down the Miller Ridge Trail. The Miller Creek drainage offers vibrant fall colors as the larch turn.

This trail is commonly used for hunting access.

TRAIL INFORMATION: Trail is rarely maintained, so expect downfall. The first ¾ mile is steep and climbs almost 1000' in elevation to the ridge. This section can be difficult to follow so watch for blazes. With the exception of periodic clearing needs, the ridgeline section of the trail is generally in fair condition and easy to follow through the timber, but you will need to watch for cairns and blazes in the openings.

ELEVATION: Beginning at 3120' and ending at 5240' on the Libby Divide Trail.

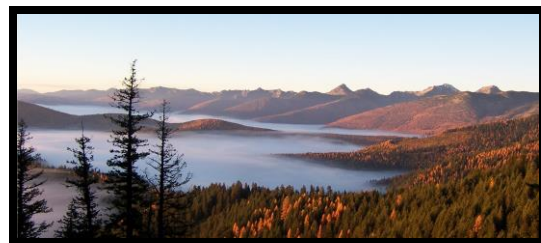
USE: Light

DIFFCULTY: Moderate

MAINTENANCE: Periodically **Current Status** - www.fs.usda.gov/activity/kootenai/recreation/hiking

MAPS: District Map

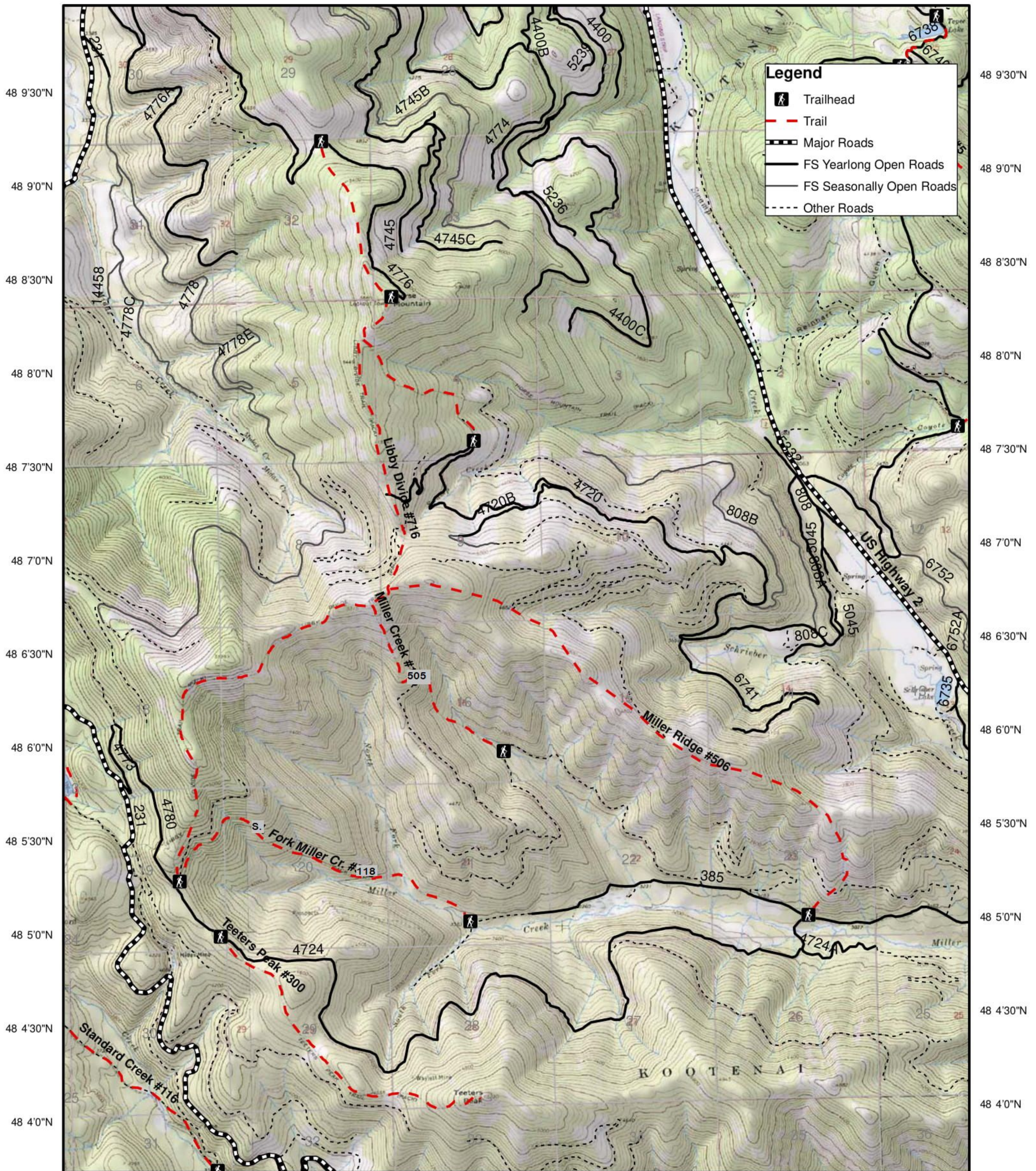
CLOSURES: Restricted to motorized use



Miller Creek Drainage

Swamp Cr. #121, Libby Divide #716, Teeters Pk. #300, Miller Cr. #118, 505 & 506

115 31'0"W 115 30'0"W 115 29'0"W 115 28'0"W 115 27'0"W 115 26'0"W 115 25'0"W



115 31'30"W 115 30'30"W 115 29'30"W 115 28'30"W 115 27'30"W 115 26'30"W 115 25'30"W 115 24'30"W