



TRAIL DESCRIPTION

For more trail information contact:
Kootenai National Forest
Libby Ranger District 406-293-7773



Leigh Lake # 132 2 miles

Recommended Season
Summer Fall

ACCESS: From Libby, travel 7 miles south on Highway 2 and turn right onto the Bear Creek Road just past the 40 mile marker. Stay on the Bear Creek Road for 3 miles to Cherry Creek Road # 867. Travel approximately 4 miles on Cherry Creek Road #867. Turn right on Leigh Creek Road #4786 for approximately 2 miles to the end of the road and the trailhead.

FACILITIES: Trailhead

SETTING: This trail climbs almost 900 vertical feet through moderately open forest. The first portion cuts through old growth forest and crosses a few small streams and avalanche chutes. About 1.5 miles up there is a gorgeous 100-foot waterfall, and the trail transitions into an alpine setting with impressive views of Leigh Creek and Snowshoe Peak. The glacial cirque lake offers stunning scenery surrounding the lake with the cascading sounds of the waterfall below.

OPPORTUNITIES: Hiking, backpacking, fishing, viewing scenery, photography, hunting, and snowshoeing.

ATTRACTIONS & CONSIDERATIONS: This is a short, steep trail that is heavily used as an access point into the wilderness and Leigh Lake. There is a scenic falls at about 1.5 miles, and excellent views of Snowshoe Peak, Bockman Peaks and Leigh Creek available along the trail. Mountain goats are commonly seen above the lake, and huckleberries can be found along the trail in late summer.

TRAIL INFORMATION: This is a relatively steep trail that is quite brush and has only fair tread. At the 1.5 mile and the falls, the trail splits and there are two primitive trail options, one on each side of Leigh Creek. Both trails climb steeply for another 150 vertical feet. Access to the south spur may be limited depending on water level, and this last section may be difficult for some hikers. If solitude is your goal this may not be the best trail due to its heavy use.

This trail is not suitable for stock.

ELEVATION: Beginning at 4200' at the Leigh Creek Road and ending at 5144' at Leigh Lake

USE: Heavy

DIFFCULTY: Moderate

MAINTENANCE: Yearly **for Current Status -**
www.fs.usda.gov/activity/kootenai/recreation/hiking

MAPS: Forest Map, District Travel Map

CLOSURES: All motorized use

RESTRICTIONS: No camping is allowed at Leigh Lake.

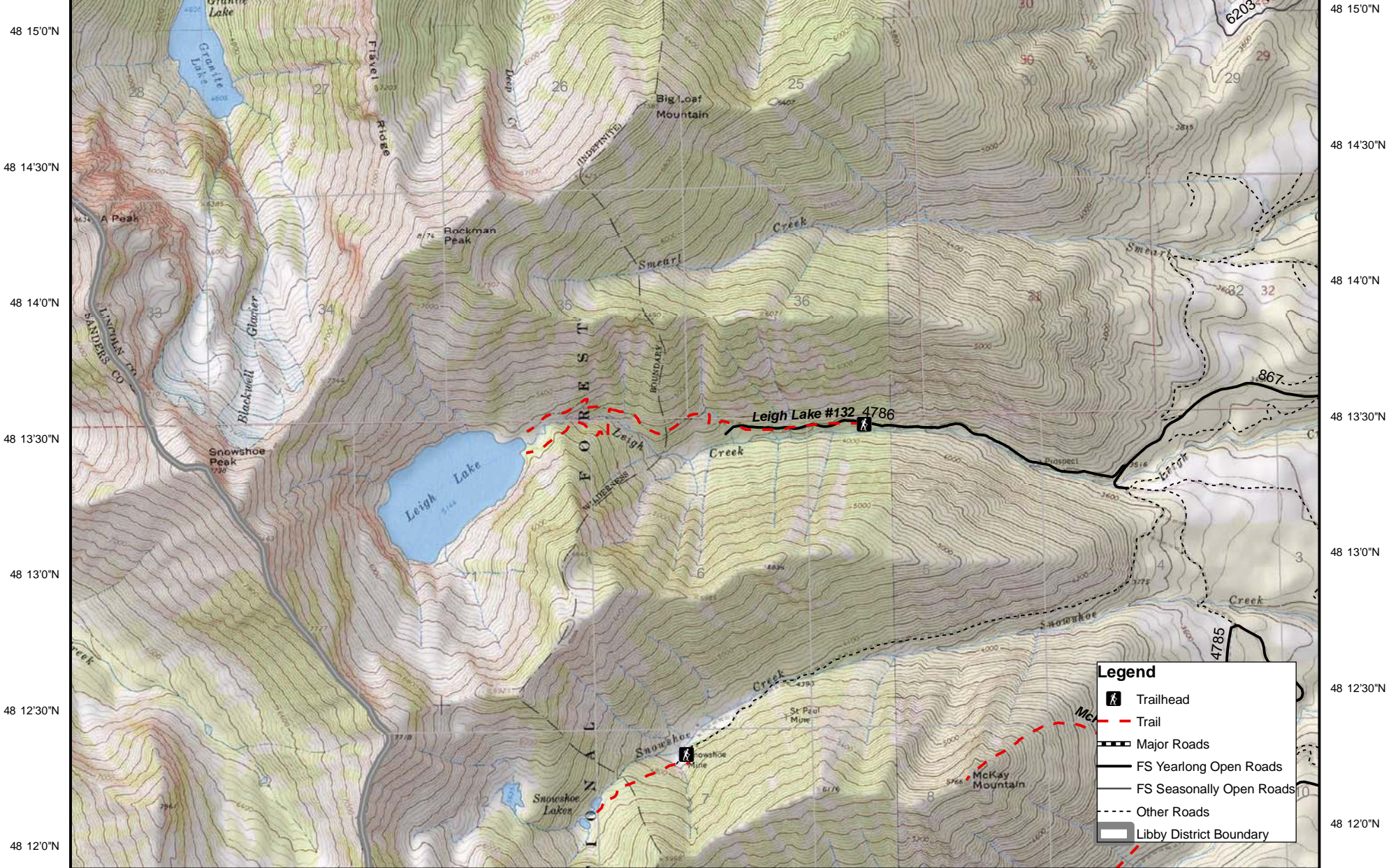


Leigh Lake

Prepared by Cabinet Back Country Horsemen

Leigh Lake Trails #132 and #132A

115 42'0"W 115 41'30"W 115 41'0"W 115 40'30"W 115 40'0"W 115 39'30"W 115 39'0"W 115 38'30"W 115 38'0"W 115 37'30"W 115 37'0"W 115 36'30"W 115 36'0"W 115 35'30"W



Legend

- Trailhead
- Trail
- Major Roads
- FS Yearlong Open Roads
- FS Seasonally Open Roads
- Other Roads
- Libby District Boundary

115 42'0"W 115 41'30"W 115 41'0"W 115 40'30"W 115 40'0"W 115 39'30"W 115 39'0"W 115 38'30"W 115 38'0"W 115 37'30"W 115 37'0"W 115 36'30"W 115 36'0"W 115 35'30"W

