

TRAIL DESCRIPTION

For more trail information contact:
Kootenai National Forest
Libby Ranger District 406-293-7773



Lake Creek Trail # 656 3.9 Miles; #656A .3 Miles

Recommended Season
Summer Fall

ACCESS: From Libby, head south on Highway 2 for 25 miles to the West Fisher Road (about mile marker 57). Continue up the West Fisher road for 6 miles and take a left on the Geiger Lakes Road #6748 for 1.5 miles to the trailhead parking area.

FACILITIES: Trailhead with limited parking and small turn around radius for trailers. Stock users are encouraged to park and unload at the junction of the 6748 road as there may be no turn around options if other vehicles are parked at the trailhead.

SETTING: Closed forest setting with views into Lake Creek for the first mile then moves into open subalpine habitat with striking views.

OPPORTUNITIES: Hiking, viewing scenery, fishing horseback riding, berry picking, and hunting.

ATTRACTIONS & CONSIDERATIONS: Trail provides access to the Cabinet Mountain Wilderness and ends at Lost Buck Pass on the Cabinet Divide. It's about 1 ¾ miles to Lower Geiger Lake, 3 miles to Upper Geiger Lake and about 1.5 miles from Upper Geiger Lake to Lost Buck Pass. Trail #656A is a .3 mile spur from the main trail to Upper Geiger Lake. A short hike to the west from Lost Buck Pass offers scenic vistas of Wanless Lake and Engle Peak.

The scenery is spectacular through most of hike and the upper lake offers excellent views of Carney Peak.

This trail connects to Fourth of July Trail #115 and Divide Trail #360S, offering several loop trail options.

TRAIL INFORMATION: The Lake Creek Trail has a moderate grade and is only 1 ¾ miles to lower Geiger Lake for an easy family hike. The majority of the trail does have significant brush encroachment. The section just past the junction with the Fourth of July Trail is severely washed with trenches over one foot deep, and the last ¼ mile to Lost Buck Pass traverses through a large boulder field. These sections can be challenging for stock.

ELEVATION: Beginning at 3720 feet and ending at 5970 feet at the Cabinet Divide.

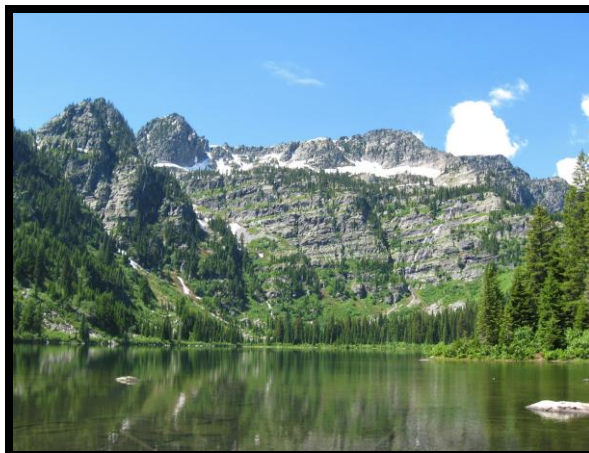
TRAIL USE: Heavy

DIFFCULTY: Moderate

MAINTENANCE: Yearly– **Current Status** - www.fs.usda.gov/activity/kootenai/recreation/hiking

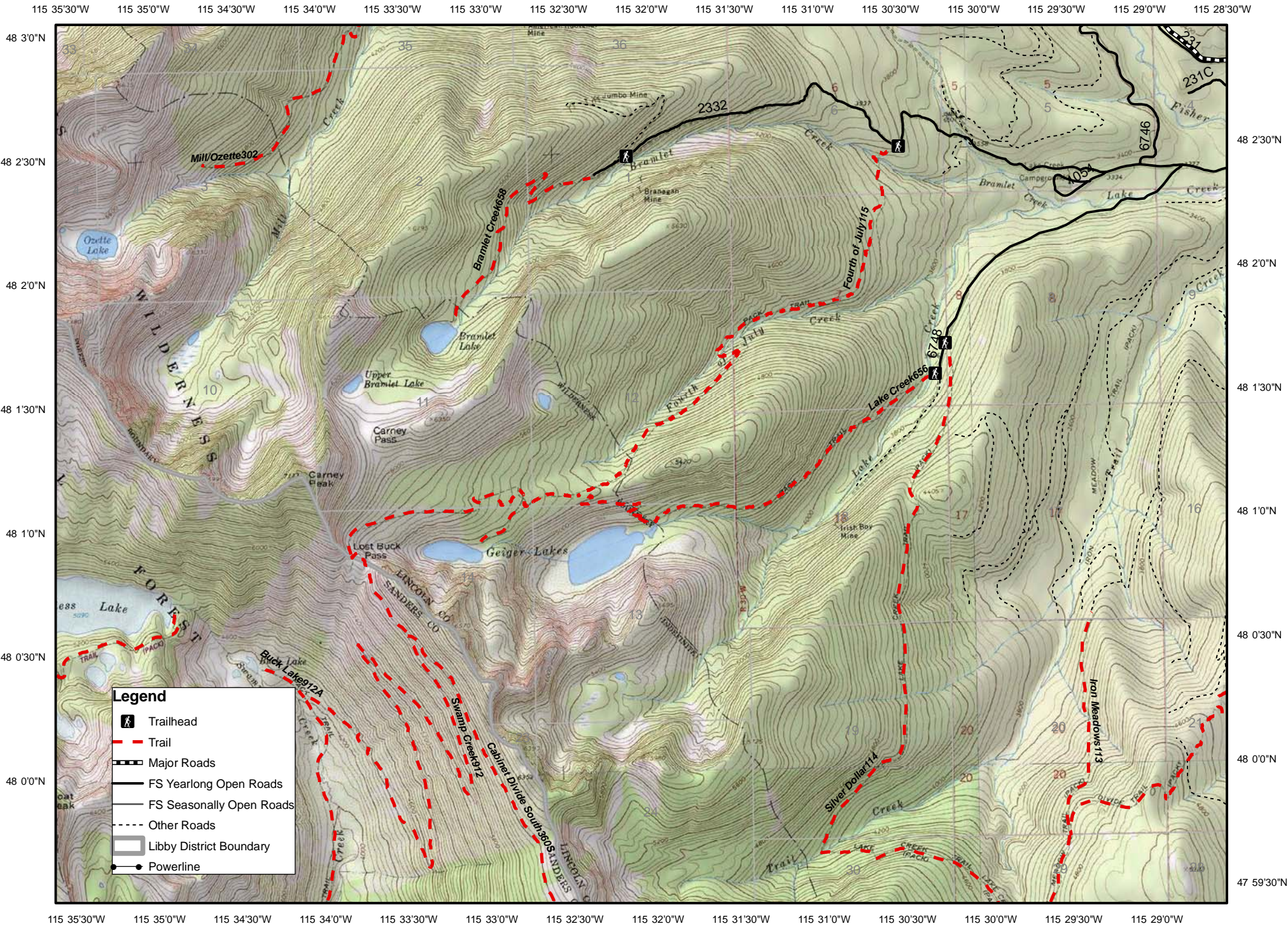
MAPS: Forest Map, District Travel Map

CLOSURES: All motorized use. Stock not allowed within 200' of Lakes. **No camping allowed at Lower Geiger Lake.**



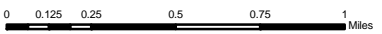
Lower Geiger Lake

Lake Cr. #656, Upper Geiger #656A, 4th of July #115 and Bramlet #658



Legend

- Trailhead
- Trail
- Major Roads
- FS Yearlong Open Roads
- FS Seasonally Open Roads
- Other Roads
- Libby District Boundary
- Powerline



Map Created with TOPOI ©2003 National Graphic (www.nationalgraphic.com/topo)

*Refer to Libby Ranger District Travel map for current road restrictions.