



TRAIL DESCRIPTION

For more trail information contact:
Kootenai National Forest
Libby Ranger District 406-293-7773



Kenelty Caves Trail # 859 .8 Miles

Recommended Season
Summer Fall

ACCESS: From Libby, head south on US Highway 2 for about 30 miles and take the Raven Creek Road # 761 (just past the Raven Work Center). Stay on the 761 road for about a mile and take the left fork onto the 763 road. Stay on the 763 road for about 4 miles and take a right onto the Sedlak 6753 road. About a half mile up the Sedlak Road take the left fork, stay on this road until it crosses Sedlak Creek (about $\frac{3}{4}$ mile) and take the first junction to the right. Proceed another $\frac{1}{4}$ mile to the trailhead.

ELEVATION: Beginning at 3700' at the road and ending at 4300' at the first Cave.

USE: Moderate

DIFFCULTY: Moderate

MAINTENANCE: Periodically

For Current Status -

www.fs.usda.gov/activity/kootenai/recreation/hiking

MAPS: Forest Map, District Travel Map

CLOSURES: All motorized use

FACILITIES: None

SETTING: Open ridge to the mouth of Kenelty Caves.

OPPORTUNITIES: Caving

ATTRACTIONS & CONSIDERATIONS:

Kenelty Caves. Caves with stalagmites are a rare occurrence in this area, so the caves are a welcome opportunity. There are several cave openings to the east of the first cave, but there are no trails to these openings so hike around a bit if you want to see them.

TRAIL INFORMATION: This is a short but fairly steep trail that can be difficult to follow, poor tread and marking so watch for blazes.



Kenelty Caves

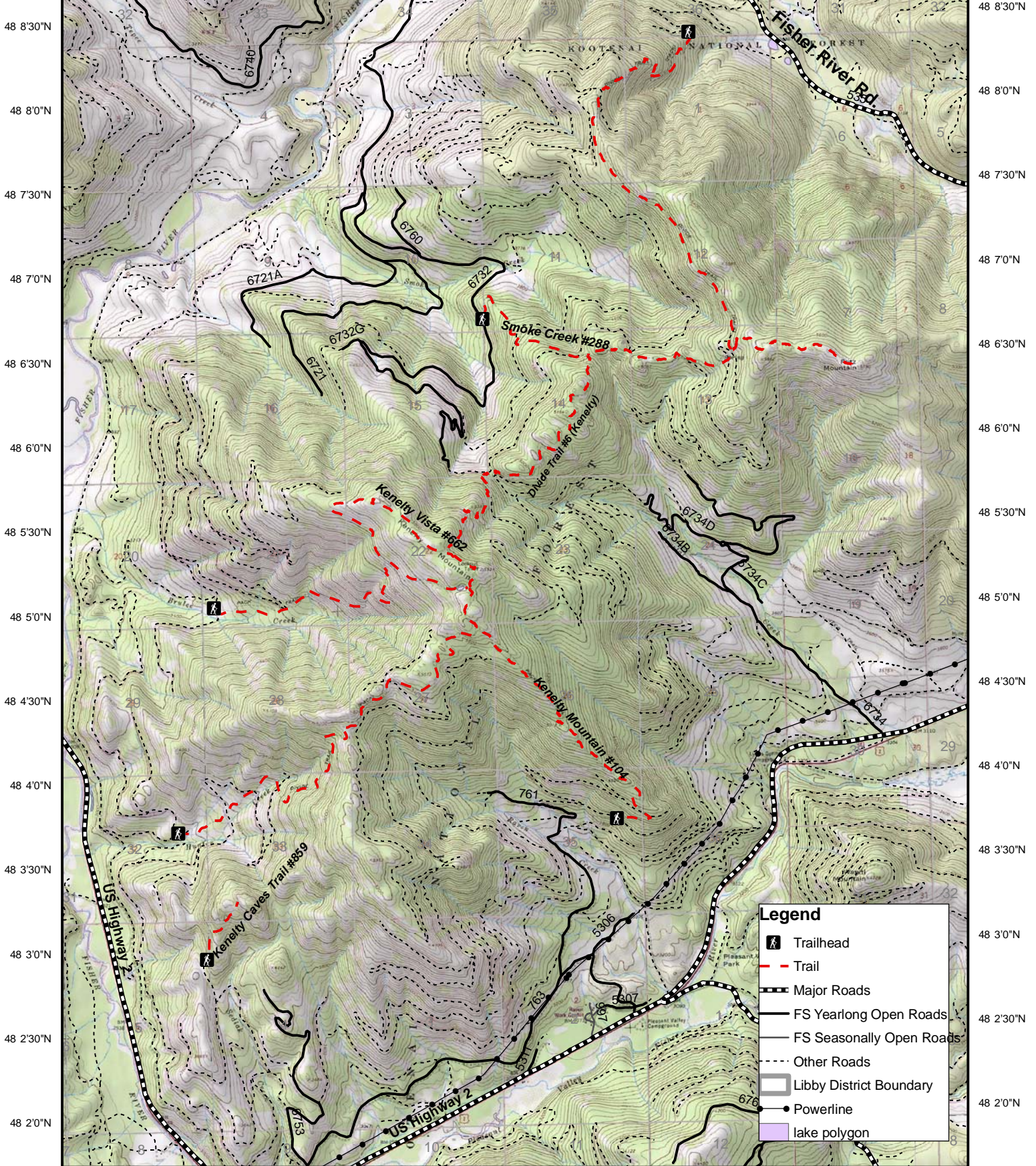


Kenelty Cave Opening

Prepared by Cabinet Back Country Horsemen

Kenelty Mountain Trails

115 22'0"W 115 21'0"W 115 20'0"W 115 19'0"W 115 18'0"W 115 17'0"W 115 16'0"W 115 15'0"W



Legend

- Trailhead
- Trail
- Major Roads
- FS Yearlong Open Roads
- FS Seasonally Open Roads
- Other Roads
- Libby District Boundary
- Powerline
- lake polygon

115 22'30"W 115 21'30"W 115 20'30"W 115 19'30"W 115 18'30"W 115 17'30"W 115 16'30"W 115 15'30"W

