

## TRAIL DESCRIPTION

For more trail information contact:  
Kootenai National Forest  
Libby Ranger District 406-293-7773



## IRON MEADOWS # 113 4.2 Miles

**Recommended Season**  
Summer Fall

**ACCESS:** From Libby, head south on US Highway 2 for 28 miles and take the Silver Butte Road on the right. Proceed up Silver Butte for 8.7 miles to the Iron Meadows Trailhead. This trail connects to the Divide Cutoff Trail #63 for connection to the Bear Lakes Trail #178 and the Cabinet Divide Trail #360S

**FACILITIES:** None. Ample turn around area and parking at the junction with the powerline and the Silver Butte Road.

**SETTING:** The first two miles traverse through predominately closed lodgepole pine stands and transitions to a mixed mature forest just before the junction with the Divide Cutoff Trail # 63, and extends to the meadows ( a small linear opening in the forest canopy) and back into a lodgepole pine forest down to the Divide Trail and Road #2314. Few viewing opportunities on this trail until the Divide

**OPPORTUNITIES:** Hiking, horseback riding, hunting, and huckleberry picking.

**ATTRACTIONS & CONSIDERATIONS:** This trail provides access to the Divide Cutoff Trail # 63, the Cabinet Mountain Wilderness, and the Divide Trail 6N with numerous loop opportunities including Bear Lakes, Cabinet Divide, Barea Creek, Trapper Creek, Olson Creek on the Silver Butte side and Silver Dollar Trail on the West Fisher Side.

Iron Meadows is a historic mining trail was one of the earliest trails constructed in the area and was on the 1903 maps. It extended in much its current location from Silver Butte to the divide and down Trail Creek to the West Fisher.

**TRAIL INFORMATION:** This is a gradual trail through closed forest with limited scenic options. It is used primarily for hunting and for access to the Divide Trail #6, and the Divide Cutoff Trail #63. The northern section in Trail Creek is utilized to make a loop from the Silver Dollar Trail #114 down the Trail Creek Road System to the West Fisher Road.

When cleared, the trail is in good condition for stock and hikers, and may offer mountain biking opportunities.

This is grizzly bear country so take your bear spray.

**ELEVATION:** Beginning at 3600' at the Silver Butte Road, climbing to 4600' at the junction of the Divide Trail and dropping to 3800' at the junction of the 2314A Road

**USE:** Moderate

**DIFFCULTY:** Moderate

**MAINTENANCE:** Periodically

**For Current Status -**

[www.fs.usda.gov/activity/kootenai/recreation/hiking](http://www.fs.usda.gov/activity/kootenai/recreation/hiking)

**MAPS:** Forest Map, District Travel Map

**CLOSURES:** All motorized use.

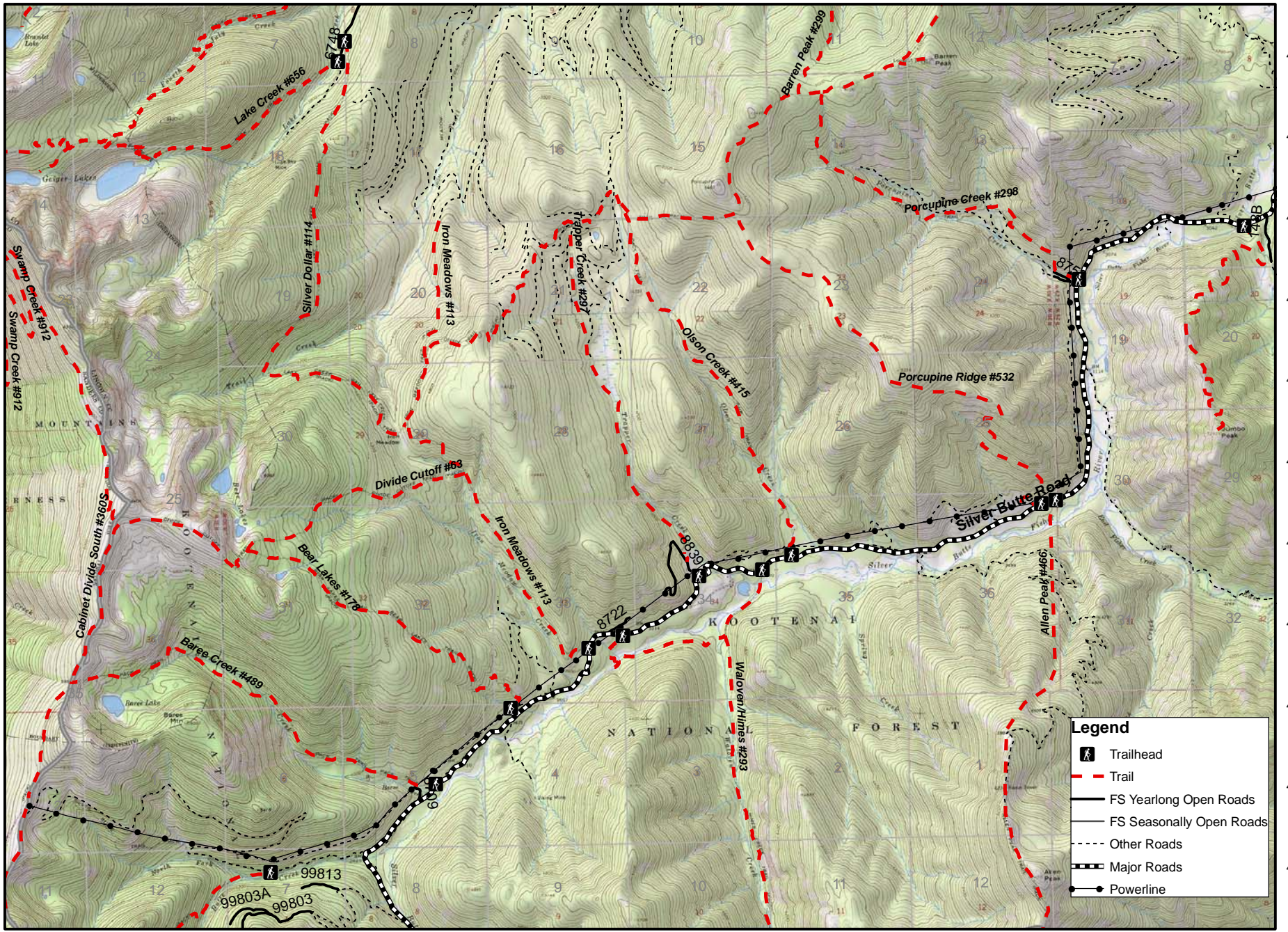


# Silver Butte North Trails

115 33°0'W 115 32°0'W 115 31°0'W 115 30°0'W 115 29°0'W 115 28°0'W 115 27°0'W 115 26°0'W 115 25°0'W 115 24°0'W 115 23°0'W 115 22°0'W

48 1°30'N  
48 1°0'N  
48 0°30'N  
48 0°0'N  
47 59°30'N  
47 59°0'N  
47 58°30'N  
47 58°0'N  
47 57°30'N  
47 57°0'N  
47 56°30'N

48 1°30'N  
48 1°0'N  
48 0°30'N  
48 0°0'N  
47 59°30'N  
47 59°0'N  
47 58°30'N  
47 58°0'N  
47 57°30'N  
47 57°0'N  
47 56°30'N



**Legend**

- Trailhead
- Trail
- FS Yearlong Open Roads
- FS Seasonally Open Roads
- Other Roads
- Major Roads
- Powerline

115 33°0'W 115 32°0'W 115 31°0'W 115 30°0'W 115 29°0'W 115 28°0'W 115 27°0'W 115 26°0'W 115 25°0'W 115 24°0'W 115 23°0'W 115 22°0'W

