

TRAIL DESCRIPTION

For more trail information contact:
Kootenai National Forest
Libby Ranger District 406-293-7773



Indian Head Trail # 14 3.5 miles

Recommended Season
Summer Fall

ACCESS: From Libby, travel south on Highway 2 and turn right onto the Shaughnessy Road (Golf Course Hill). Turn left at the 3-way intersection at the top of the hill and follow the Snowshoe road for .5 mile. Turn right on Flower Creek Road 128 for approximately 5 miles to the trailhead where there is ample parking. Take the Parmenter Tie Trail #40 for about ¼ mile until you see the Indian Head Trail sign.

FACILITIES: Trailhead and stock ramp. This trailhead also provides access to Hanging Valley #135, Flower Creek Trail #137, Parmenter Tie # 15, Flower Lake and Flower Point trailheads.

SETTING: The first ¼ mile you lose about 150 feet in elevation before you start climbing up a main ridge line. The trail traverses this ridge the entire length and transitions from closed moist forest types to moderately open subalpine forest. The last ½ mile is open and rocky with spectacular views.

OPPORTUNITIES: Hiking, photography, hunting, wilderness access, viewing scenery and Geocaching.

ATTRACTIONS & CONSIDERATIONS: The trail provides access to the Cabinet Mountain Wilderness, and views of lakes and mountain peaks in the northern end of the Cabinet Wilderness. There is a Geocache Site on Indian Head Mountain, and it is also the location of electronic equipment for Libby's television.

TRAIL INFORMATION: Trail #14 maintains a steep, difficult and steady grade to the top. There are a few areas near the top that the trail tread disappears, but it is not too hard to relocate the trail. The panoramic views from the top are spectacular and worth the arduous hike. Sky and Hanging valley lakes may be viewed from this trail. *Stock use is not recommended.*

This is grizzly bear country so take your bear spray.

ELEVATION: Beginning at 3640' at the Trailhead on the Flower Creek Road and ending at Indian Head Mountain at 7144'.

USE: Low

DIFFCULTY: Difficult

MAINTENANCE: Periodically **Current Status**
- www.fs.usda.gov/activity/kootenai/recreation/hiking

MAPS: Forest Map, District Travel Map

CLOSURES: All motorized use

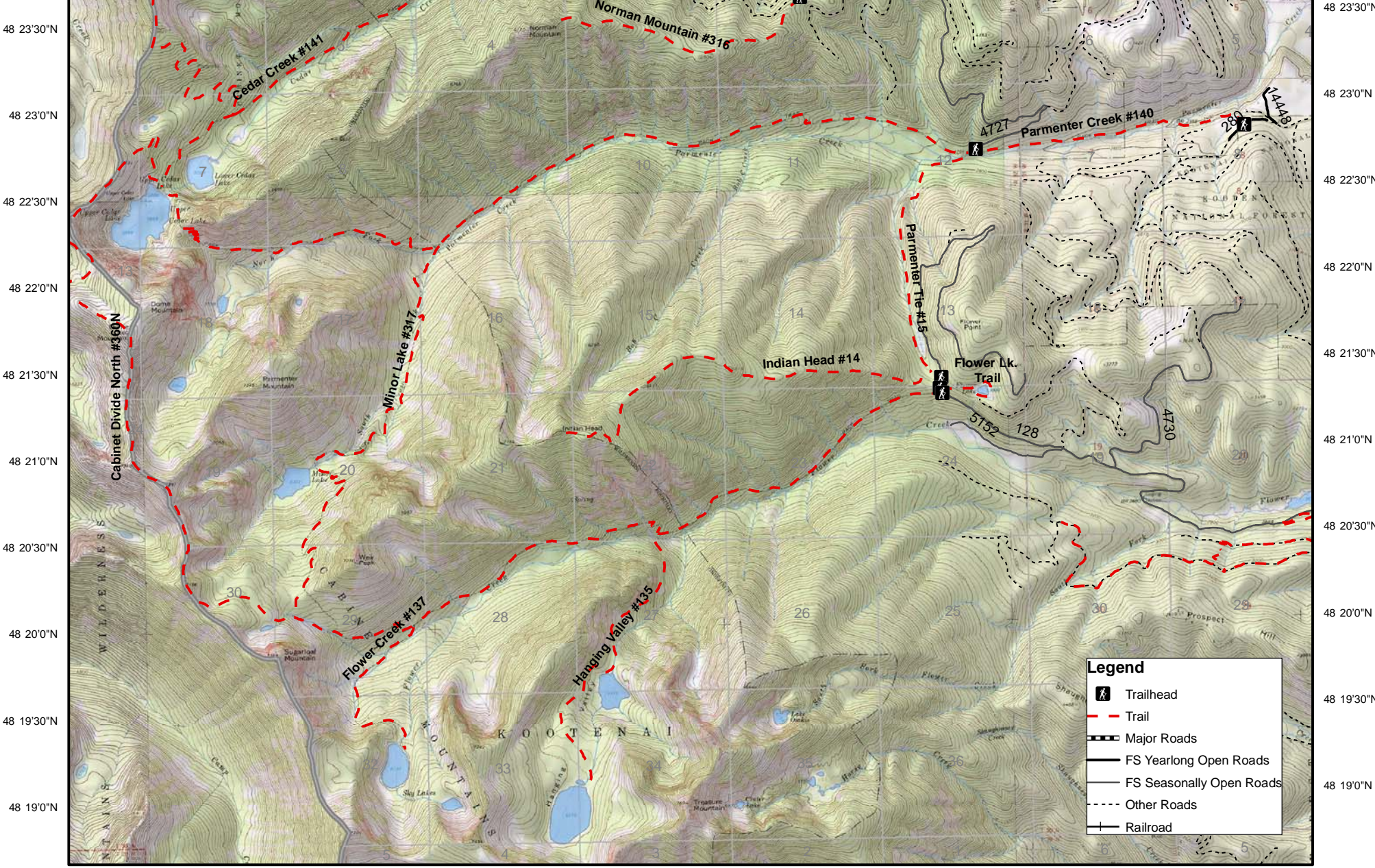


Indian Head Mountain

Prepared by Cabinet Back Country Horsemen

Flower Cr. #137, Parmenter Cr. #140 and N. Fork Parmenter #139, Hanging Valley #135

115 45'30"W 115 44'30"W 115 43'30"W 115 42'30"W 115 41'30"W 115 40'30"W 115 39'30"W 115 38'30"W 115 37'30"W 115 36'30"W 115 35'30"W



Legend

- Trailhead
- Trail
- Major Roads
- FS Yearlong Open Roads
- FS Seasonally Open Roads
- Other Roads
- Railroad

115 45'30"W 115 44'30"W 115 43'30"W 115 42'30"W 115 41'30"W 115 40'30"W 115 39'30"W 115 38'30"W 115 37'30"W 115 36'30"W 115 35'30"W

