



**TRAIL DESCRIPTION**  
KOOTENAI NATIONAL FOREST  
For more trail information contact:  
Libby Ranger District 406-293-7773



**Hanging Valley Trail # 135**  
**2.8 Miles**

**Recommended Season**  
Summer Fall

**ACCESS:** From Libby, travel south on Highway 2 and turn right onto the Shaughnessy “Golf Course” Hill Road. Turn left at the 3-way intersection at the top of the hill and follow Snowshoe road for .5 mile. Turn right on the Flower Creek Road 128 for approximately 6 miles to the trailhead. Hike the Flower Creek Trail for about three miles and the Hanging Valley Trail is about ¼ mile past the wilderness boundary.

**FACILITIES:** Trailhead and stock ramp. This trailhead also provides access to Flower Creek Trail #137, Indianhead Trail #14, Parmenter Tie # 15, Flower Lake and Flower Point trailheads.

**SETTING:** The first 2 miles on the Flower Creek Trail passes through forested to moderately open forested south slopes above Flower Creek and transitions to closed forest to the junction with Hanging Valley Trail. The Hanging Valley Trail is a primitive, moderately open forested trail with ample rocks, root’s and scree to Lower Hanging Valley Lake and transitions to a forested subalpine basin to Upper Hanging Valley Lake. This setting offers unobstructed views of Treasure Mountain.

**OPPORTUNITIES:** Hiking, backpacking, fishing, camping, viewing scenery, hunting, snowshoeing.

**ATTRACTIONS & CONSIDERATIONS:** The trail provides access to the Cabinet Mountain Wilderness and Hanging Valley Lakes.

**TRAIL INFORMATION:** This trail has a fairly steep grade to Lower Hanging Valley Lake and a moderate grade between Lower and Upper Hanging Valley Lake. The trail is well known for its grueling ascent and rocky terrain. There is an abundance of dead trees along the trail, so expect some downfall. This is grizzly bear country so take your bear spray.

Because trail conditions are primitive with lots of rock and roots it is not suitable for stock.

**ELEVATION:** Beginning at 4200’ at the junction with the Flower Creek Trail to 5936’ at the lower lake and 6370’ and Upper Hanging Valley Lake.

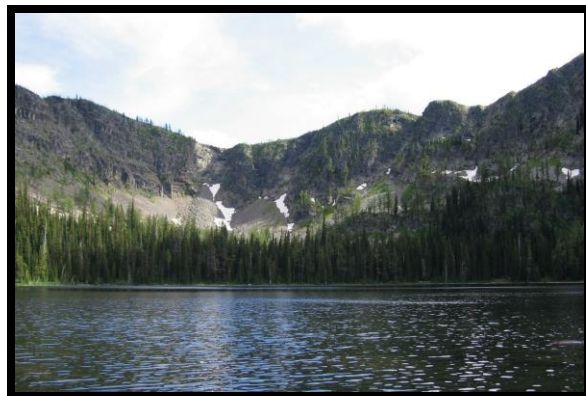
**USE:** Moderate

**DIFFCULTY:** Difficult

**MAINTENANCE:** Periodically **Current Status -**  
[www.fs.usda.gov/activity/kootenai/recreation/hiking](http://www.fs.usda.gov/activity/kootenai/recreation/hiking)

**MAPS:** Forest Map, District Travel Map

**CLOSURES:** All motorized use. Stock not allowed within 200 feet of lakes.



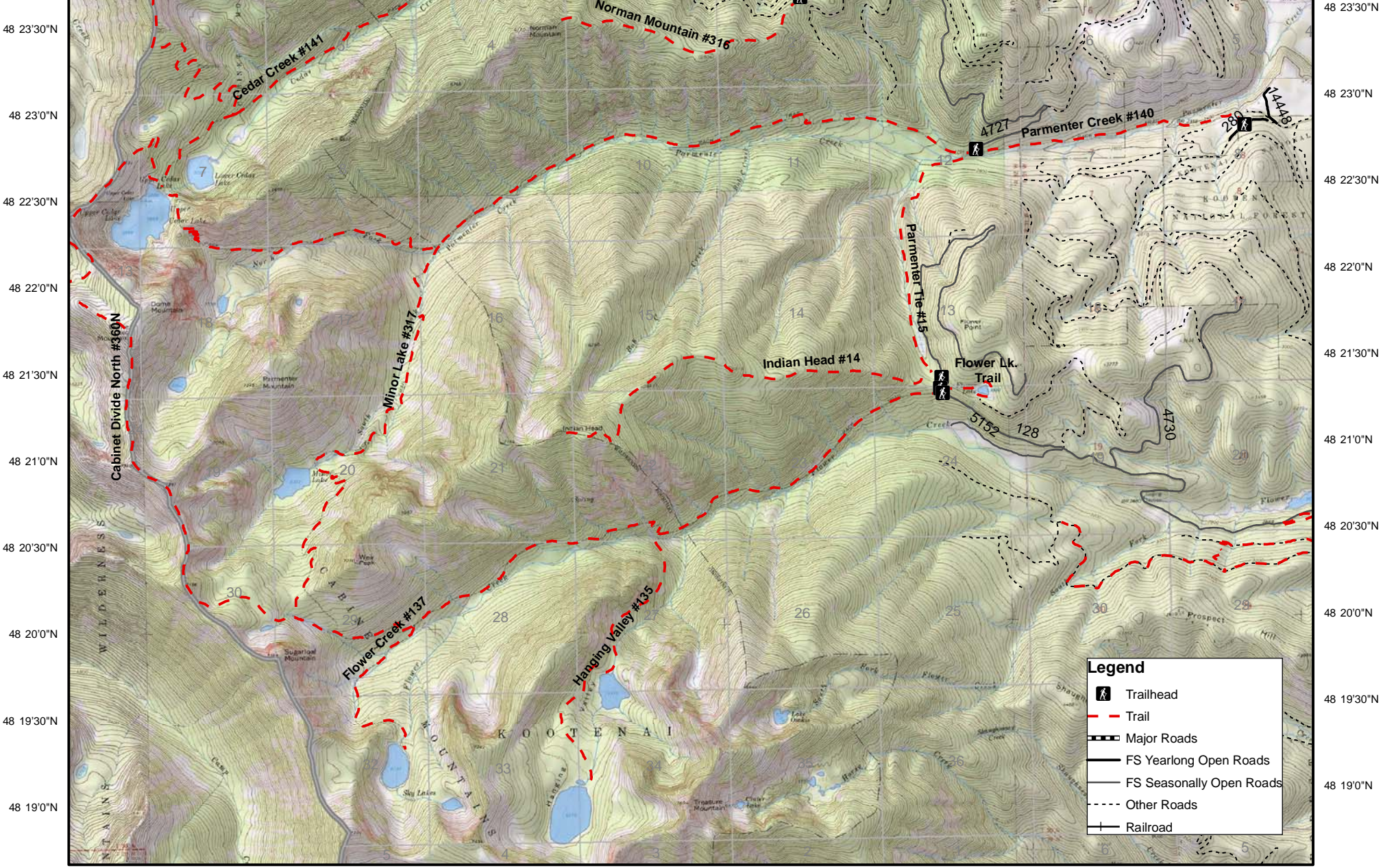
*Upper Hanging Valley Lake*

*Prepared by Cabinet Back Country Horsemen*

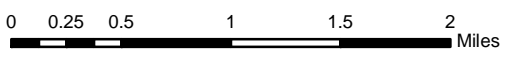


# Flower Cr. #137, Parmenter Cr. #140 and N. Fork Parmenter #139, Hanging Valley #135

115 45'30"W 115 44'30"W 115 43'30"W 115 42'30"W 115 41'30"W 115 40'30"W 115 39'30"W 115 38'30"W 115 37'30"W 115 36'30"W 115 35'30"W



115 45'30"W 115 44'30"W 115 43'30"W 115 42'30"W 115 41'30"W 115 40'30"W 115 39'30"W 115 38'30"W 115 37'30"W 115 36'30"W 115 35'30"W



**Legend**

- Trailhead
- Trail
- Major Roads
- FS Yearlong Open Roads
- FS Seasonally Open Roads
- Other Roads
- Railroad