

TRAIL DESCRIPTION
KOOTENAI NATIONAL FOREST
For more trail information contact:
Libby Ranger District 406-293-7773



Granite Creek Trail # 136
6.3 miles

Recommended Season
Summer Fall

ACCESS: From Libby, travel south on US Highway 2 and turn right onto Shaughnessy "Golf Course" Hill Road across from the Industrial Park. Turn left at the 3-way intersection at the top of the hill and follow Snowshoe road for .5 mile. Turn right onto Granite Creek Road #618 and drive 8 miles to the trailhead. Trailer parking and roadside stock loading ramp is provided .3 miles before the trailhead.

FACILITIES: Trailhead and stock loading ramp.

SETTING: The entire length of this trail parallels Granite Creek. The first section was burned in a wildfire in 2015 but the vegetation is recovering. The middle third of the trail traverses through a large grove of giant cedars at about 2.5 miles in, there is a nice campsite near beautiful Granite Falls. The last third of the trail passes through some high brush, but at the end of the trail hikers are rewarded with a breathtaking view of A Peak as it towers above Granite Lake.

OPPORTUNITIES: Hiking, backpacking, fishing, viewing scenery, horseback riding, hunting, snowshoeing and ski touring.

ATTRACTIONS & CONSIDERATIONS: The trail provides access to the Cabinet Mountain Wilderness, Granite Falls, Granite Lake and stunning views of A Peak and Blackwell Glacier.

TRAIL INFORMATION: The grade of the trail is fairly easy. The trail crosses Granite Creek four times, so be prepared to get your feet wet, depending on the season. Watch for Devil's Club and stinging nettles in the last section of trail. Carry pepper spray and expect wildlife on or near the trail, and bring bug spray if you are camping at the lake. There are two locations that can be hazardous to stock; a rocky outcrop about 1/2 mile up and the stream crossing at about 3 1/2 miles.

ELEVATION: Beginning at 3200' at the end of the Granite Creek Road and ending at 4600' at Granite Lake

USE: Heavy

DIFFCULTY: Moderate (as an alternative, consider the first 2 miles to Granite Falls as your destination for an easy family hike)

MAINTENANCE: Yearly **Current Status -**
www.fs.usda.gov/activity/kootenai/recreation/hiking

MAPS: Forest Map and District Travel Map

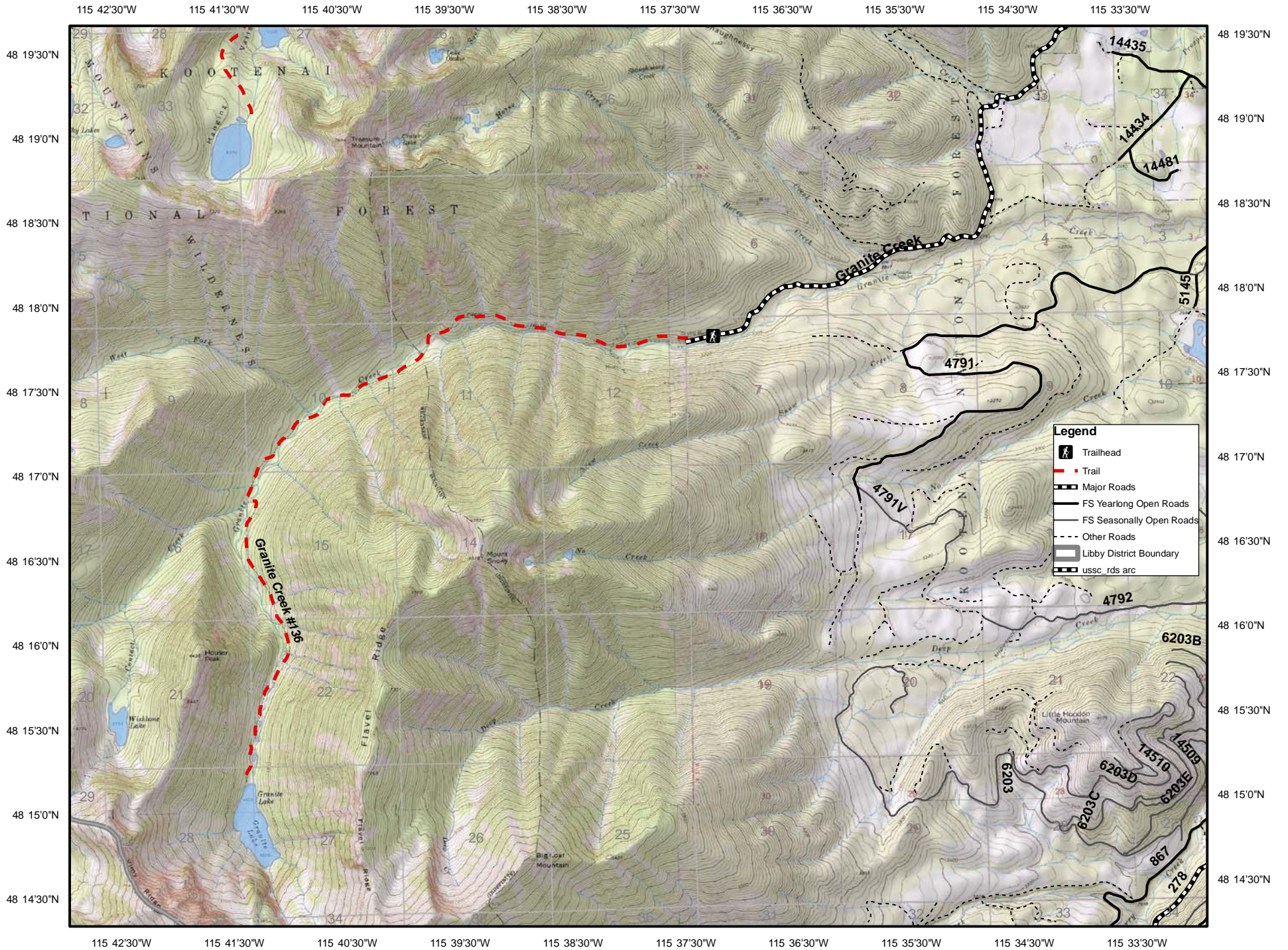
CLOSURES: All motorized use

RESTRICTIONS: No stock within 200 feet of the lake.



Granite Lake

Granite Creek Trail #136



115 42'30"W 115 41'30"W 115 40'30"W 115 39'30"W 115 38'30"W 115 37'30"W 115 36'30"W 115 35'30"W 115 34'30"W 115 33'30"W

0 0.125 0.25 0.5 0.75 1 Miles

*Refer to Libby Ranger District Travel map for current road restrictions.

Map Created with TOPO!©2013 National Geographic (www.nationalgeographic.com/topo)