



TRAIL DESCRIPTION

For more trail information contact:
Kootenai National Forest
Libby Ranger District 406-293-7773



4th of July Trail # 115 3 Miles

Recommended Season
Summer Fall

ACCESS: From Libby, head south on Highway 2 for 25 miles to the West Fisher Road (about mile marker 57). 6 miles up the West Fisher, take a left on the 2332 Road for ¾ mile and take the right fork just before the Lake Creek Campground for another 1.2 miles to the trailhead.

FACILITIES: Trailhead is not suitable for large stock trailers due to limited turning area. Smaller non-living trailers can get turned around. There is an old stock unloading ramp.

SETTING: Closed forest setting until it hits the divide into the Geiger Lakes Basin.

OPPORTUNITIES: Hiking, viewing scenery, horseback riding, and hunting.

ATTRACTIONS & CONSIDERATIONS: Provides access to the Cabinet Mountain Wilderness at the end of the trail just before it ties in with the Lake Creek Trail on the ridge above Geiger Lakes. Scenery is spectacular once you cross the ridge into the Geiger Lakes basin. This trail provides a pleasant 7 mile loop from 4th of July to Geiger Lakes and down the Lake Creek Trail. Add another 3.5 miles if you don't shuttle a vehicle.

The 4th of July mining trail was constructed in the late 1800's making it one of the earliest trails in Lincoln County. It was included on Forest maps as early as 1903.

TRAIL INFORMATION: The 22332 Road is washed and rough once you take the right fork just before the Lake Creek Campground.

Within a few hundred yards of the trailhead, the trail crosses Bramlet Creek which can be a challenge for foot traffic early in the season. This trail is generally in good condition for horse and hikers.

ELEVATION: Beginning at 3800 feet at the trailhead and ending at 5200 where it crosses the ridge just before the Lake Creek Trail junction.

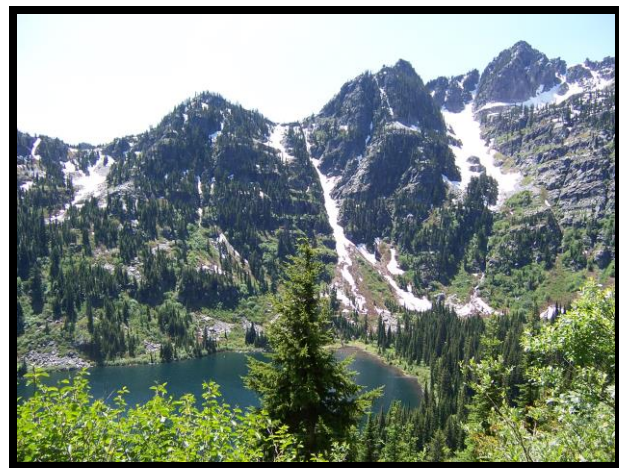
TRAIL USE: Moderate

DIFFCULTY: Moderate

MAINTENANCE: Yearly – **Current Status -**
www.fs.usda.gov/activity/kootenai/recreation/hiking

MAPS: Forest Map, District Travel Map

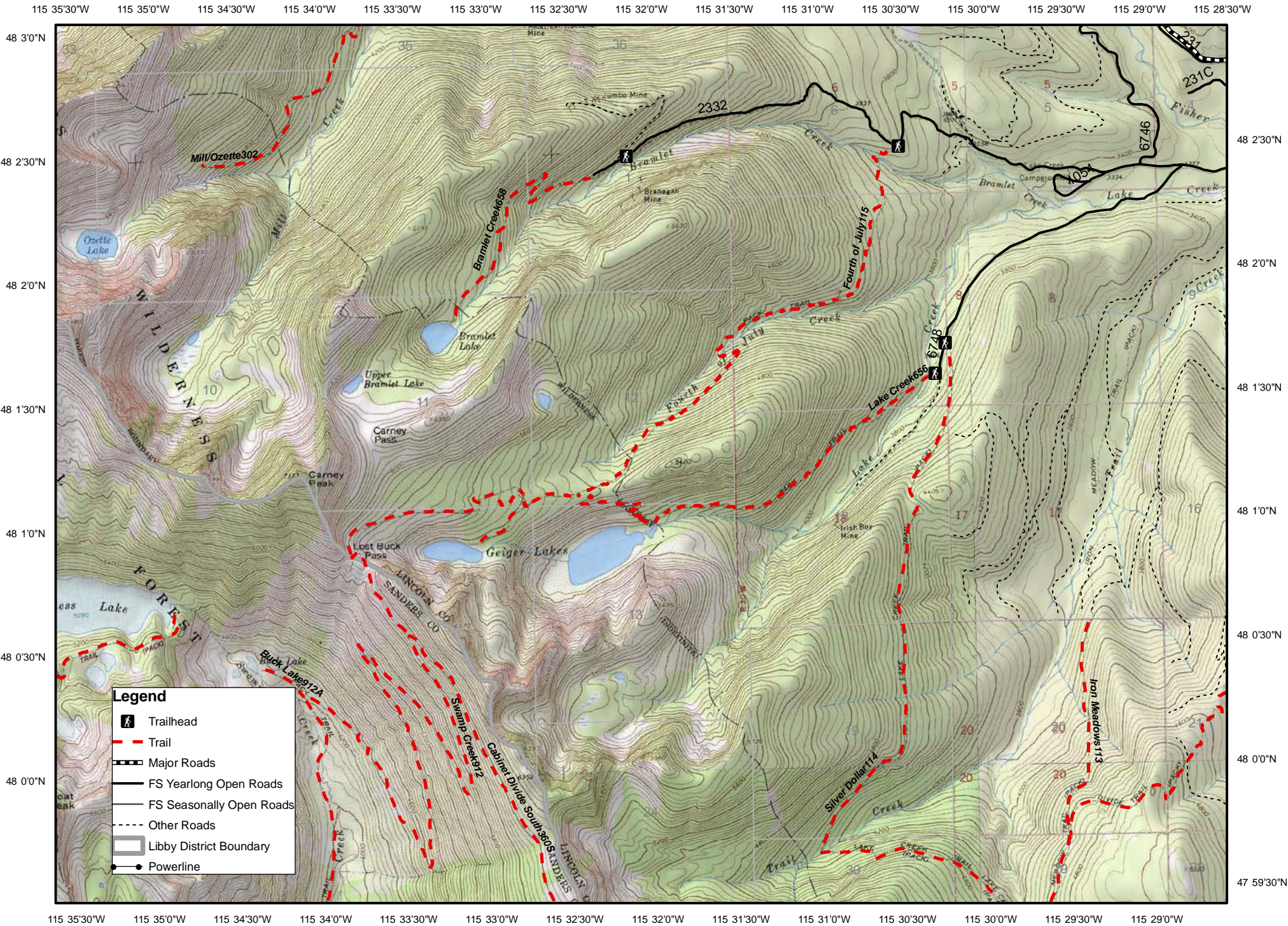
CLOSURES: All motorized use



Looking Down on Geiger Lake from the Pass

Prepared by Cabinet Back Country Horsemen

Lake Cr. #656, Upper Geiger #656A, 4th of July #115 and Bramlet #658



115 35'30"W 115 35'0"W 115 34'30"W 115 34'0"W 115 33'30"W 115 33'0"W 115 32'30"W 115 32'0"W 115 31'30"W 115 31'0"W 115 30'30"W 115 30'0"W 115 29'30"W 115 29'0"W 115 28'30"W

