

TRAIL DESCRIPTION

For more trail information contact:
Kootenai National Forest
Libby Ranger District 406-293-7773



Flagstaff Mountain Trail # 43 2 Miles

Recommended Season
Summer Fall

ACCESS: From Libby, travel east on Highway 37, cross the Kootenai River, and take the first left on River Road. Travel around 4.5 miles to Quartz Creek Road #600 on the right and follow for about 5 miles. Turn left on the West Fork Road #4690 (directly across from the 5 mile marker), cross Quartz Creek and in about .5 mile stay left as the road forks. In another 1.5 miles turn left at the "T" junction. Follow this windy Road #4690 for approximately 6.3 miles to the trailhead on the left. The road is rough in places.

FACILITIES: None

SETTING: Diverse setting from closed forest canopy, open young forest and open forest on the ridge.

OPPORTUNITIES: Hiking, spectacular scenery, observing wildlife, viewing wildflowers.

ATTRACTIONS & CONSIDERATIONS: The trail winds through grassy meadows and follows a gentle ridge to the summit of Flagstaff Mountain. Vista's provide stunning views of the Kootenai River, the Kootenai Valley, the Selkirk Mountains of Idaho, and the Purcell and Cabinet Mountains of Montana. Be on the lookout for Bighorn Sheep. Abundant wildflowers cover the ridge in the spring and summer.

TRAIL INFORMATION: If the trailhead sign is missing look for posts marking the trail. This is an excellent, easy to moderate hike for the family. The trail can be a little hard to follow through the openings so watch for rock

cairns. There is no water available on this trail.

ELEVATION: Beginning at 4695' at road 4690 and ending at 6075' at Flagstaff Mountain Summit

USE: Moderate

DIFFCULTY: Moderate

MAINTENANCE: Yearly

For Current Status -

www.fs.usda.gov/activity/kootenai/recreation/hiking

MAPS: Forest Map, District Travel Map

CLOSURES: All motorized use

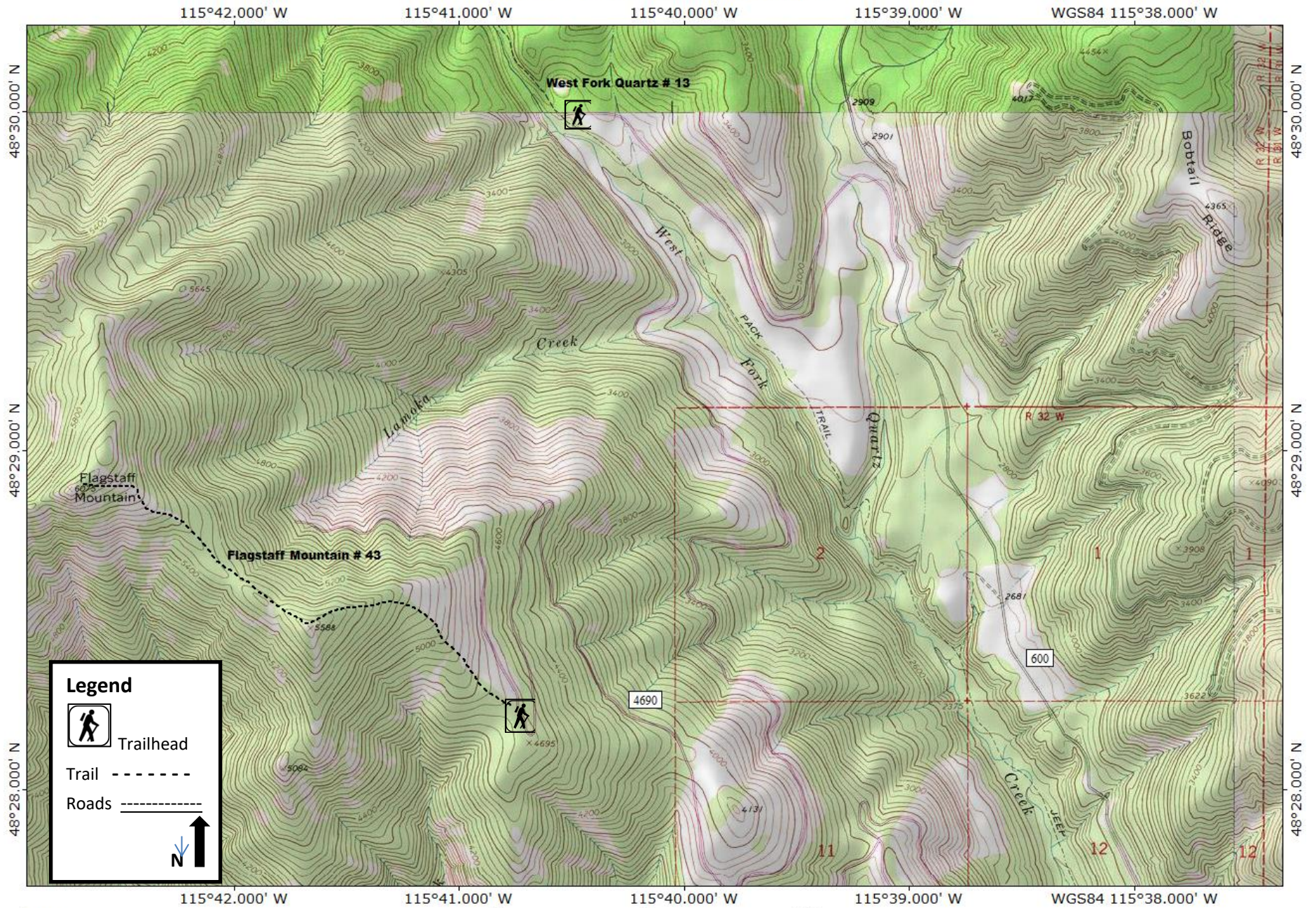


Flagstaff Mountain Trail

Prepared by Cabinet Back Country Horsemen and Libby Chamber of Commerce

Flagstaff Mountain Trail # 43 & West Fork Quartz Trail # 13

TOPO! map printed on 02/06/19 from "Untitled.tpo"



TN/MN
15°

0 5 1 MILE
0 1000 FEET 0 500 1000 METERS
Map created with TOPO!® ©2003 National Geographic (www.nationalgeographic.com/topo)