

TRAIL DESCRIPTION

For more trail information contact:
Kootenai National Forest
Libby Ranger District 406-293-7773

Divide Trail South Trail # 6S 11.3 Miles



Recommended Season
Summer Fall

ACCESS: From Libby, head south on Highway 2 for 27 miles to the West Fisher Road # 231. Trail 6S is at the 1 mile on the West Fisher Road and shortly crosses the West Fisher River. This trail can also be accessed from numerous trails further up the West Fisher Road as well as numerous trails off the Silver Butte Road; which is another 3 miles south on Highway 2.

FACILITIES: None

SETTING: Diverse setting from closed forest canopy, young open forest and open forest on the ridge.

OPPORTUNITIES: Hiking, viewing, horseback riding, hunting, snowshoeing and potential for mountain biking.

ATTRACTIONS & CONSIDERATIONS: The majority of the trail is located along the ridge between the West Fisher River and Silver Butte Fisher River. While much of the trail is in a moderately closed canopy, there are several areas that open to spectacular views. The best views are on the first two miles with views of the Fisher River Valley and the western section of the trail with views of the Cabinet Mountains. Traditionally a hunting trail, but summer horseback use is increasing.

TRAIL INFORMATION: The trail immediately crosses the West Fisher River and can be difficult for stock and hikers in late spring and early summer. The first mile is gentle along closed forest roads, and then climbs about 2400 feet in the next 2 miles toward Barren Peak. The subsequent 2 miles to

the west are undulating until it drops into Trapper Creek and once again has a fairly steep grade for a mile climbing out of Trapper Creek before dropping again at a fairly steep grade into Iron Meadows.

The trail is in good condition for stock and hikers and provides connectivity for several loop opportunities. Trails accessing the Divide Trail include; Porcupine Creek, Porcupine Ridge, Olson Creek, Trapper Creek and Iron Meadows off the Silver Butte Road and Barren Peak, Iron Meadows and Silver Dollar off the West Fisher Road.

ELEVATION: Beginning at 2940' at the West Fisher River, highest elevation 5300', and ending at 4400' at the Iron Meadows Trail.

USE: Moderate

DIFFCULTY: Moderate

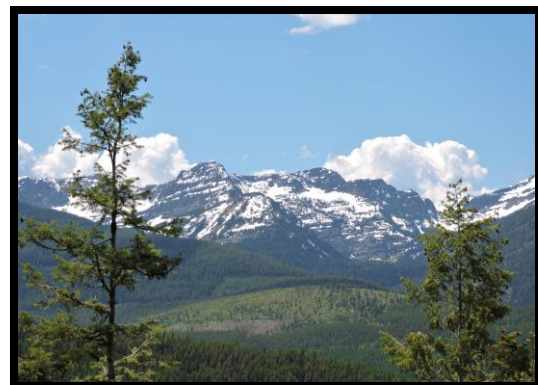
MAINTENANCE: Yearly - Cleared most years by Cabinet Back Country Horsemen.

Current Status -

www.fs.usda.gov/activity/kootenai/recreation/hiking

MAPS: Forest Map, District Travel Map

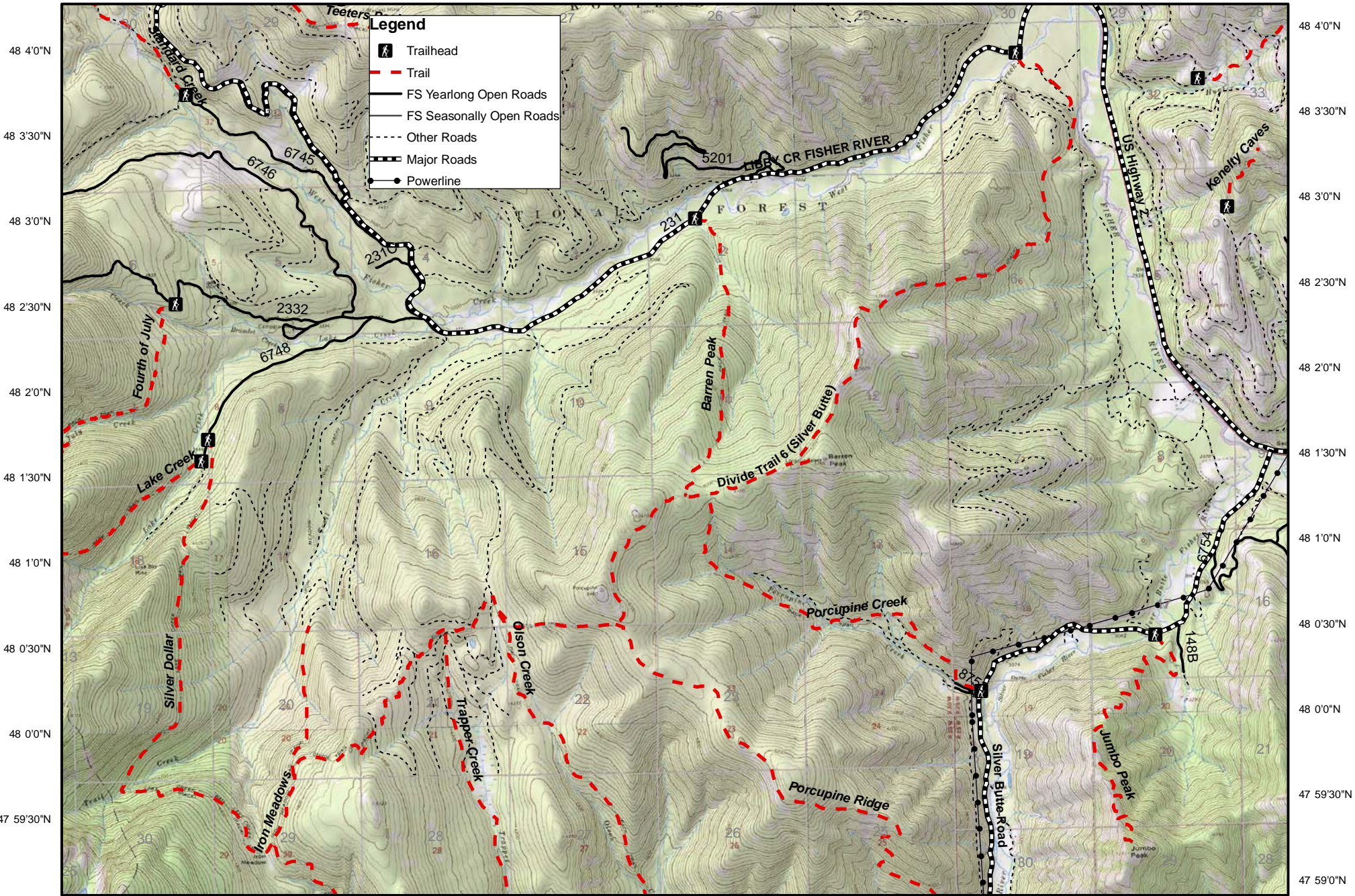
CLOSURES: All motorized use



View of Cabinet Mountains

Barren Peak Trail #299, Divide Trail 6, Silver Dollar Trail #114

115 31'0"W 115 30'0"W 115 29'0"W 115 28'0"W 115 27'0"W 115 26'0"W 115 25'0"W 115 24'0"W 115 23'0"W 115 22'0"W 115 21'0"W



Legend

- Trailhead
- Trail
- FS Yearlong Open Roads
- FS Seasonally Open Roads
- Other Roads
- Major Roads
- Powerline

115 31'30"W 115 30'30"W 115 29'30"W 115 28'30"W 115 27'30"W 115 26'30"W 115 25'30"W 115 24'30"W 115 23'30"W 115 22'30"W 115 21'30"W

