

TRAIL DESCRIPTION

For more trail information contact:
Kootenai National Forest
Libby Ranger District 406-293-7773



Divide Cutoff Trail # 63 3.3 Miles

Recommended Season
Summer Fall

ACCESS: From Libby, head south on US Highway 2 for 28 miles and take the Silver Butte Road on the right. Proceed up Silver Butte for 8.7 miles to the Iron Meadows Trailhead or 9.4 miles to the Bear Lakes Trailhead. Trail #63 connects the Iron Meadows and Bear Lakes Trails to the Cabinet Divide Trail #360S

FACILITIES: None.

SETTING: Closed forest canopy with primarily small lodgepole pine stands in the lower section from Iron Meadow and transitions to mixed conifer towards Bear Lakes and opens in to rocky subalpine habitat for the upper mile to the Cabinet Divide.

OPPORTUNITIES: Hiking, viewing scenery, horseback riding, hunting, and huckleberry picking.

ATTRACTIONS & CONSIDERATIONS: Provides access from Iron Meadows and Bear Lakes Trails to the Cabinet Mountain Wilderness, and Cabinet Divide South Trail.

Once you pass Bear Lakes, the scenery is stunning with views into the South Cabinets.

TRAIL INFORMATION: This is a cutoff trail from the Cabinet Divide to Iron Meadows #113. The section from Iron meadows to the Junction of Bear Lakes #178 has some steep sections. A spur trail accesses middle Bear Lake . From Bear Lakes to the Cabinet Divide, the trail traverses through several large scree areas that can be difficult for horses due to the large size of the boulders and lack of trail tread through these areas. This is grizzly bear country so take your bear spray.

ELEVATION: Beginning at 3600' at the Silver Butte Road and ending at 6300' at the Cabinet Divide.

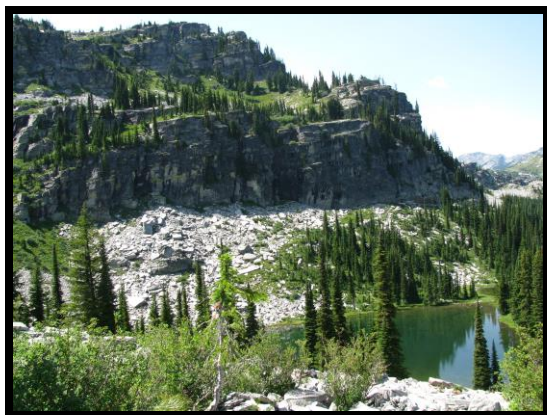
USE: Moderate

DIFFICULTY: Moderate/Difficult

MAINTENANCE: Periodically **Current Status**
- www.fs.usda.gov/activity/kootenai/recreation/hiking

MAPS: Forest Map, District Travel Map

CLOSURES: All motorized use. Stock not allowed within 200' of Lakes



Bear Lakes (Photo by Dave Thorstenson)



Bear Lakes Basin (Photo by Deena Shotzberger)

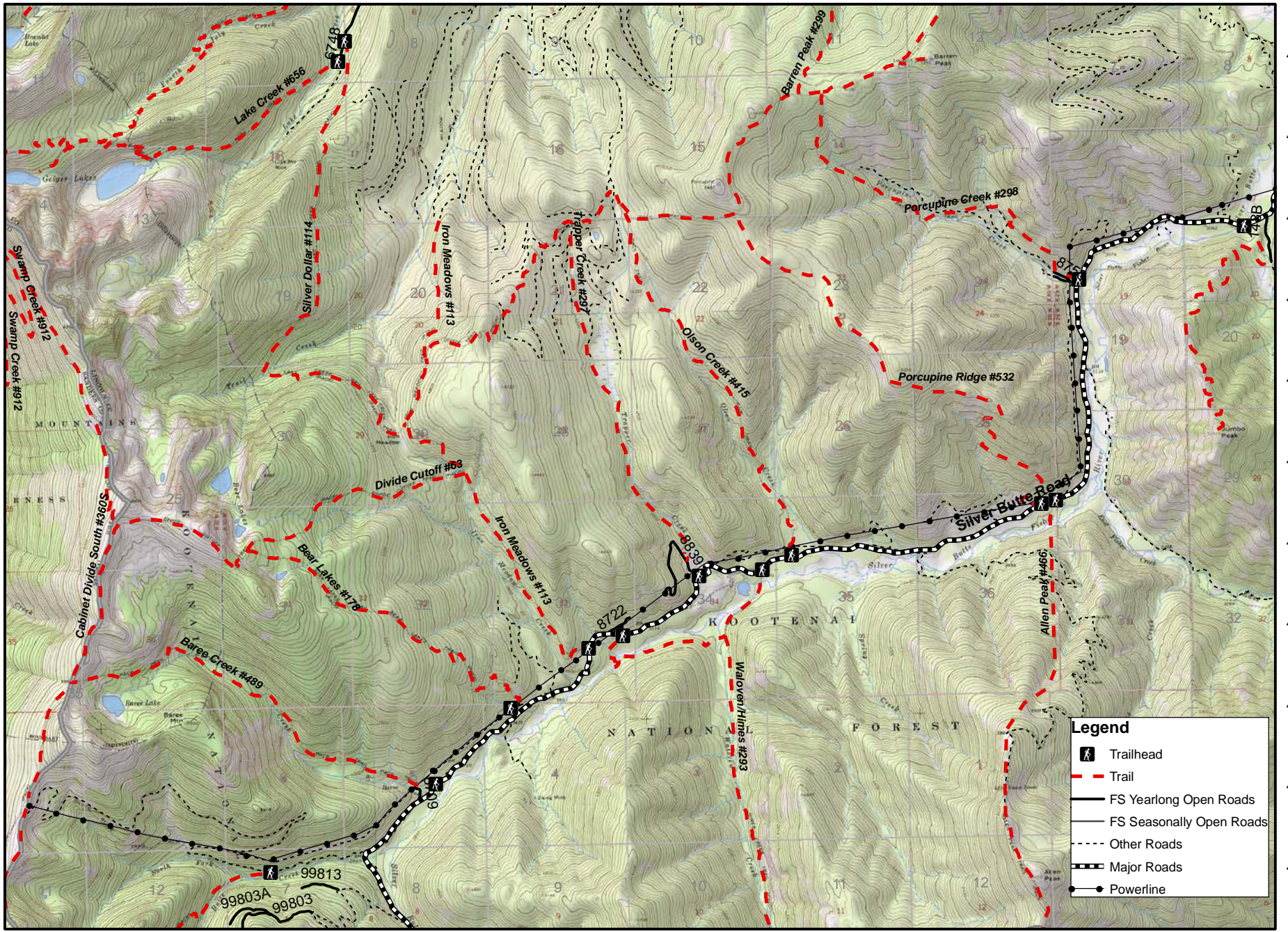
Prepared by Cabinet Back Country Horsemen

Silver Butte North Trails

115 33°0'W 115 32°0'W 115 31°0'W 115 30°0'W 115 29°0'W 115 28°0'W 115 27°0'W 115 26°0'W 115 25°0'W 115 24°0'W 115 23°0'W 115 22°0'W

48 1°30'N
48 1°0'N
48 0°30'N
48 0°0'N
47 59°30'N
47 59°0'N
47 58°30'N
47 58°0'N
47 57°30'N
47 57°0'N
47 56°30'N

48 1°30'N
48 1°0'N
48 0°30'N
48 0°0'N
47 59°30'N
47 59°0'N
47 58°30'N
47 58°0'N
47 57°30'N
47 57°0'N
47 56°30'N



115 33°0'W 115 32°0'W 115 31°0'W 115 30°0'W 115 29°0'W 115 28°0'W 115 27°0'W 115 26°0'W 115 25°0'W 115 24°0'W 115 23°0'W 115 22°0'W

