



TRAIL DESCRIPTION

For more trail information contact:
Kootenai National Forest
Libby Ranger District 406-293-7773



Cabinet Divide South Trail # 360S 5.5 Miles

Recommended Season
Summer Fall

ACCESS: From Libby- there are several options to access this trail. For access to the northern end of the trail, head south on Highway 2 for about 25 miles to the West Fisher Road #231 (about mile marker 57). Proceed up the West Fisher Road for 6 miles, take the Geiger Lakes Road #6748 for 1.5 miles to the Geiger Lakes Trail, and proceed up this trail for 3.81 miles. Or head south on Highway 2 for 28 miles and take the Silver Butte Road # 148 (about mile marker 60). Proceed up Silver Butte for about 9.4 miles to the Bear Lakes Trail # 178 for 2.8 miles to the Cutoff Trail #63, for another 1.2 miles to the Divide Trail. About 10.3 miles up the Silver Butte road, take the Baree Creek Trail # 489 for 3.3 miles to the Divide Trail or continue for 11 miles to the Powerline Road # 594, and take this road for about 6 miles to the south end of the Divide Trail.

FACILITIES: None

SETTING: This subalpine wilderness trail traverses the Cabinet Divide and has scenic views to the east and west.

OPPORTUNITIES: Hiking, viewing scenery, horseback riding, berry picking, hunting, and snowshoeing.

ATTRACTIONS & CONSIDERATIONS:

This is one of the most scenic trails on Libby District with views of the Cabinet Mountains, and several alpine lakes. Trail #360S provides connectivity for several loop opportunities. Connectivity includes Swamp Creek to the west, and Geiger, Bear, Baree

and the Powerline access road to the east. In late July and early August there is generally good huckleberry picking along the ridge. This is grizzly bear country so take your bear spray.

TRAIL INFORMATION:

This is an easy trail once you get to the ridge; but is moderately steep for most access trails to get there. The northern 1.5 mile section is not recommended for stock due to several sections of large boulders that the trail passes through. The southern 3 miles are excellent horse trails with several 10-12 mile loop options. Keep in mind that the elevation change from Silver Butte Road to the ridge is well over 2000' in about 3 miles. Water availability is marginal to nonexistent.

ELEVATION: There is little elevation change once you get to this ridge line trail and varies from a low of 5900' to a high of almost 6600'.

USE: Moderate

DIFFCULTY: Moderate

MAINTENANCE: Yearly. Often cleared by Cabinet Back Country Horsemen. **Current Status** - www.fs.usda.gov/activity/kootenai/recreation/hiking

MAPS: Forest Map, District Travel Map

CLOSURES: All motorized use



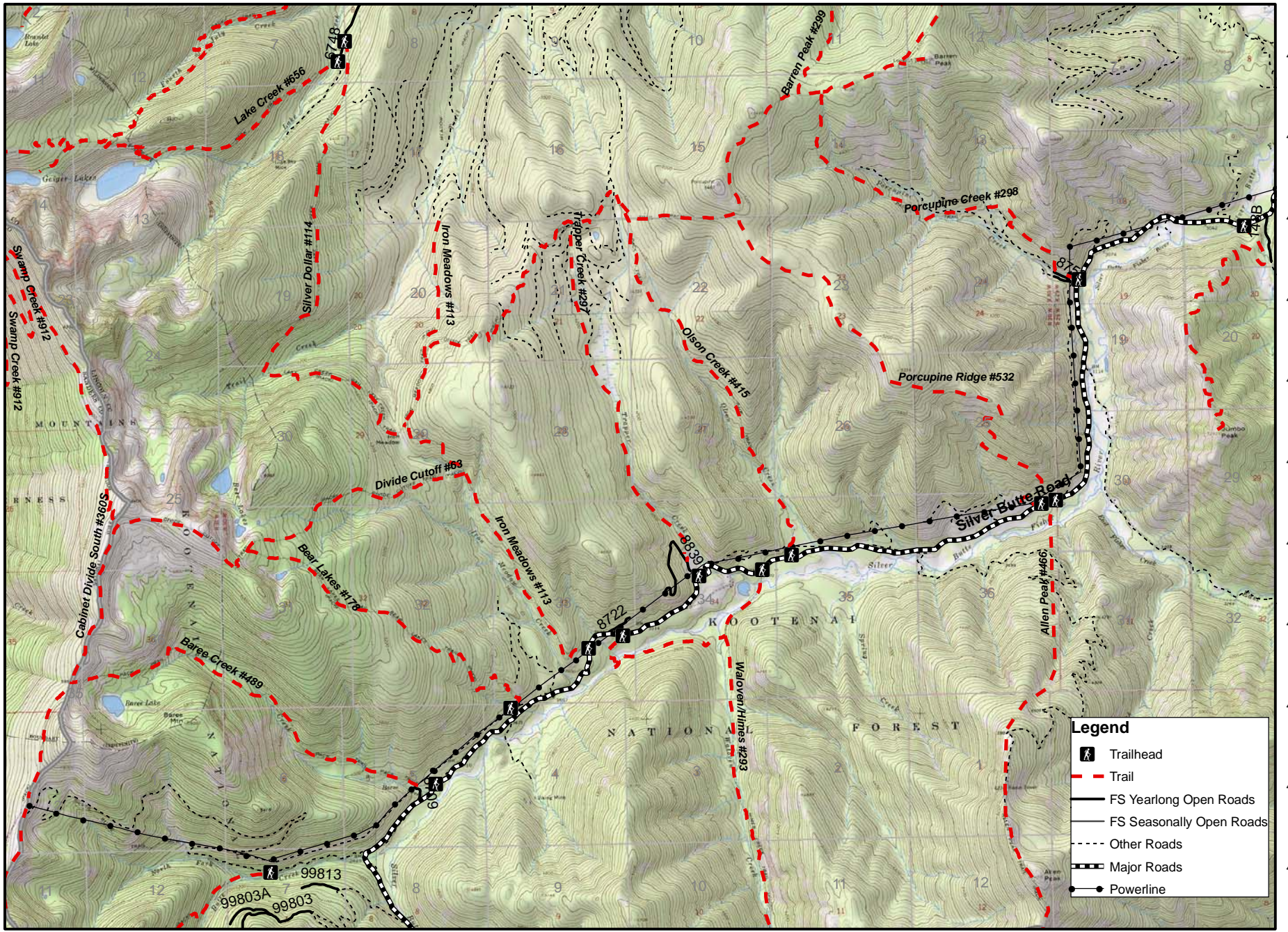
Cabinet Divide

Silver Butte North Trails

115 33°0'W 115 32°0'W 115 31°0'W 115 30°0'W 115 29°0'W 115 28°0'W 115 27°0'W 115 26°0'W 115 25°0'W 115 24°0'W 115 23°0'W 115 22°0'W

48 1°30'N
48 1°0'N
48 0°30'N
48 0°0'N
47 59°30'N
47 59°0'N
47 58°30'N
47 58°0'N
47 57°30'N
47 57°0'N
47 56°30'N

48 1°30'N
48 1°0'N
48 0°30'N
48 0°0'N
47 59°30'N
47 59°0'N
47 58°30'N
47 58°0'N
47 57°30'N
47 57°0'N
47 56°30'N



Legend

- Trailhead
- Trail
- FS Yearlong Open Roads
- FS Seasonally Open Roads
- Other Roads
- Major Roads
- Powerline

115 33°0'W 115 32°0'W 115 31°0'W 115 30°0'W 115 29°0'W 115 28°0'W 115 27°0'W 115 26°0'W 115 25°0'W 115 24°0'W 115 23°0'W 115 22°0'W

