



TRAIL DESCRIPTION

For more trail information contact:
Kootenai National Forest
Libby Ranger District 406-293-7773



Cabinet Divide North # 360N 8.6 miles

Recommended Season
Summer Fall

ACCESS: From Libby, travel 4.5 miles west on US Highway 2 and turn left onto the Cedar Creek Road. Travel 2.5 miles to Cedar Creek Trailhead #141. Hike the #141 Trail for 5.5 miles to Upper Cedar Lake and take the Cabinet Divide Trail. This trail can also be accessed via the Parmenter Trail #141 and the Flower Creek Trail #137.

Trail accesses the Cabinet Divide in the Cabinet Mountain Wilderness.

FACILITIES: Trailhead at Cedar Creek Trail. Stock users are encouraged to park at wide spot on the road just below the trailhead.

SETTING: The majority of the trail is on the Cabinet Divide in high elevation subalpine habitat and rocky, mountainous terrain. This hike offers spectacular scenery of the North Cabinet Mountains, the Kootenai River Valley on the east side and Lake Creek on the west side.

OPPORTUNITIES: Hiking, backpacking, viewing scenery, photography, horseback riding, and hunting.

ATTRACTIONS & CONSIDERATIONS: This is one of the most spectacular trails in the Cabinet Mountain Wilderness. It passes above and around numerous drainages, alpine lakes, alpine meadows and mountain tops and offers rugged scenery, wildlife, wildflowers, alpine lakes, alpine meadows, mountaintops, primitive camp sites and a rigorous hiking experience. The most popular destination is the side hike to Dome Mountain.

TRAIL INFORMATION: Trail #360N is the backbone of the Cabinet Mountain Wilderness. The majority of the trail has a rocky tread, so stock users will need to use caution. Water availability is marginal throughout the majority of trail #360N. There is water below Sugarloaf Mountain and a small spring north of Dome Mountain. This is grizzly bear country so take your bear spray.

ELEVATION: Beginning at 5900 at Upper Cedar Lake and ending at 5500' at the junction with Flower Creek Trail. High point at Dome Mountain at 7560'.

USE: Moderate

DIFFCULTY: Difficult

MAINTENANCE: Periodically **Current Status** - www.fs.usda.gov/activity/kootenai/recreation/hiking

MAPS: Forest Map & District Travel Maps

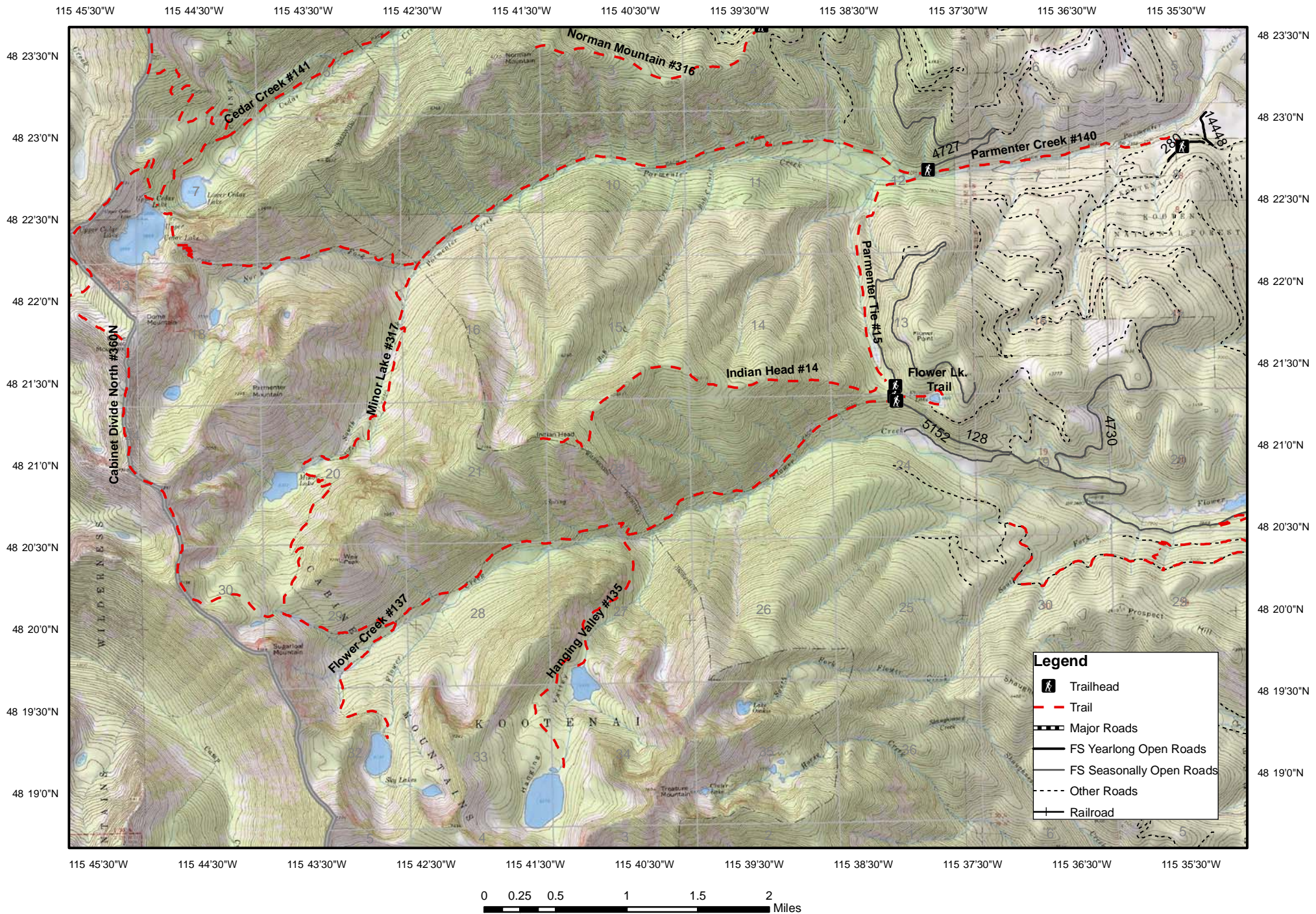
CLOSURES: All motorized use



Upper Cedar Lake

Prepared by Cabinet Back Country Horsemen

Flower Cr. #137, Parmenter Cr. #140 and N. Fork Parmenter #139, Hanging Valley #135



Legend

- Trailhead
- Trail
- Major Roads
- FS Yearlong Open Roads
- FS Seasonally Open Roads
- Other Roads
- Railroad