



TRAIL DESCRIPTION

For more trail information contact:
Kootenai National Forest
Libby Ranger District 406-293-7773



Bramlet Creek # 658 2.1 Miles

Recommended Season
Summer Fall

ACCESS: From Libby, head south on Highway 2 for 25 miles to the West Fisher Road (about mile marker 57). 6 miles up the West Fisher, take a left on the 2332 Road for $\frac{3}{4}$ mile and take the right fork just before the Lake Creek Campground. Follow the 2332 road for another 2.7 miles to the end of the road and the trailhead. The 2332 Road is washed and rough once you take the right fork just before the Lake Creek Campground

FACILITIES: There is limited parking and little room to turn vehicles around, so this trailhead is not suitable for stock trailers. Smaller stock trailers can turn around at the Fourth of July Trailhead and add an additional 1.4 miles to the trail. Larger trailers will need to park near the Lake Creek Campground.

SETTING: Closed forest with limited views until it enters the Bramlet Lake Basin.

OPPORTUNITIES: Hiking, viewing scenery, fishing, horseback riding, and hunting.

ATTRACTIONS & CONSIDERATIONS: The Bramlet Lake Trail provides one of the shortest hikes to get into the Cabinet Mountain Wilderness, and makes a great family adventure. Huckleberries are generally plentiful in late July and early August, and the scenery is spectacular once you get to Bramlet Lake.

This area is in the historic Cabinet Mining District which includes the headwaters of West Fisher and Bramlet Creek drainages. The West Fisher Mining Company constructed a wagon road into the Branigan Mine in 1899, making the historic Bramlet trail one of the earliest trails constructed in Lincoln County.

TRAIL INFORMATION: This trail takes off at a road junction just north of the Branigan

Mine. Much of the trail is located on old mining roads, with a fairly steep climb in the mid-section. The reward at the end of the trail is the Cabinet Wilderness, crystal clear Bramlet Lake, and views of Carney Peak. Hikers can bushwack for another $\frac{1}{2}$ mile and 400' elevation gain to Upper Bramlet Lake.

Bramlet Lake trail is generally in good condition for stock and hikers.

ELEVATION: Beginning at 4600 feet at the trailhead and ending at 5400 at Bramlet Lake.

TRAIL USE: Low to Moderate

DIFFCULTY: Moderate

MAINTENANCE: Yearly –

For Current Status -

www.fs.usda.gov/activity/kootenai/recreation/hiking

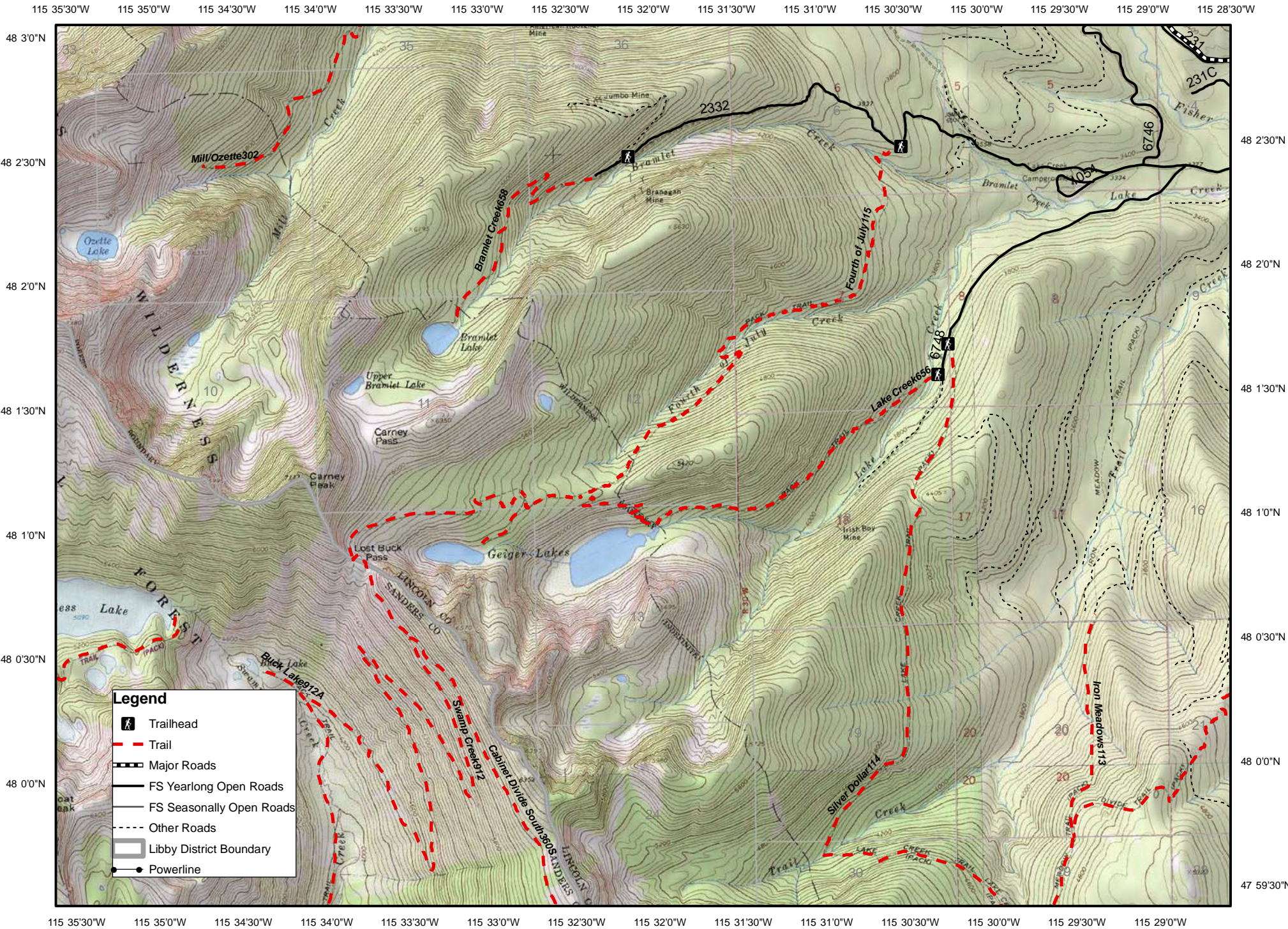
MAPS: The current trail has been routed to move it off private property, so the attached map is not accurate for the first $\frac{3}{4}$ mile where it climbs to the northeast on an old mining road and switches back to the west to join the original trail. .

CLOSURES: All motorized use. Stock not allowed within 200' of Lakes



Bramlet Lake

Lake Cr. #656, Upper Geiger #656A, 4th of July #115 and Bramlet #658



115 35°30'W 115 35°0'W 115 34°30'W 115 34°0'W 115 33°30'W 115 33°0'W 115 32°30'W 115 32°0'W 115 31°30'W 115 31°0'W 115 30°30'W 115 30°0'W 115 29°30'W 115 29°0'W 115 28°30'W