



## TRAIL DESCRIPTION

For more trail information contact:  
Kootenai National Forest  
Libby Ranger District 406-293-7773



## Bobtail Ridge Trail # 375 8.5 Miles

**Recommended Season**  
All Season

**ACCESS:** From Libby, head east on Highway 37, cross the river and take the first left on the River Road. Stay on the River Road for about 4.5 miles and take a right at the junction of the Quartz Creek Road #600. Stay on the Quartz Creek for about 1.5 miles and turn right on the 6144 Road. Follow this road for about a mile to the ridge nose and lower trailhead. To access the top portion of the trail take the Quartz Creek road for about 5 miles, turn right on the 6145 Road for 1.5 miles, and turn left on the 6704 Road for about 2 miles to the upper trailhead.

**FACILITIES:** None

**SETTING:** Ridgeline trail with diverse setting from closed forest canopy, open young forest and open mature forest on the ridge. Portions of the trail were burned in a wildfire in 2018.

**OPPORTUNITIES:** Mountain biking, hiking, viewing scenery, horseback riding, hunting, and snowshoeing.

**ATTRACTIONS & CONSIDERATIONS:** This is a great hiking, equine and mountain bike use area just outside of Libby. There are numerous open and closed roads connecting to this trail, with ample opportunities for loop hikes or rides from the Bobtrail or Quartz Creek Sides. Many locations on the trail provide scenic views of the Cabinet Mountains, the Kootenai River, the Libby Valley, Quartz Creek and Bobtail Creek.

**TRAIL INFORMATION:** The trail is a popular mountain bike trail and is well maintained by mountain bike users; so it is

generally in good condition for all user types. If you access the trail near the top off the 6704 Road it has an over-all descent for 8.5 miles. A spur trail off the ridge near the midpoint of this trail will take you to the top of Lindy Peak where there's an old tree lookout and a Geocache site. Large ponderosa pine and wildflowers are abundant on the ridge.

**ELEVATION:** Beginning at the lower road access at 3200', and ending at the upper trailhead at 4200'. The highest section of trail is on Lindy Peak via the Lindy Peak Trail #275A at 4323'. There is a steep section of the trail that drops down to the powerline and the closed 6144B Road at about 2800'

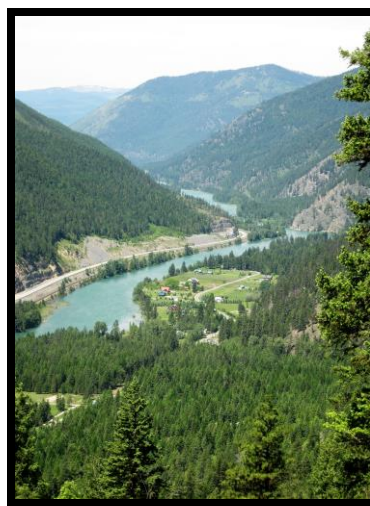
**USE:** Moderate

**DIFFCULTY:** Moderate

**MAINTENANCE:** Yearly

**MAPS:** Forest Map, District Travel Map

**CLOSURES:** All motorized use

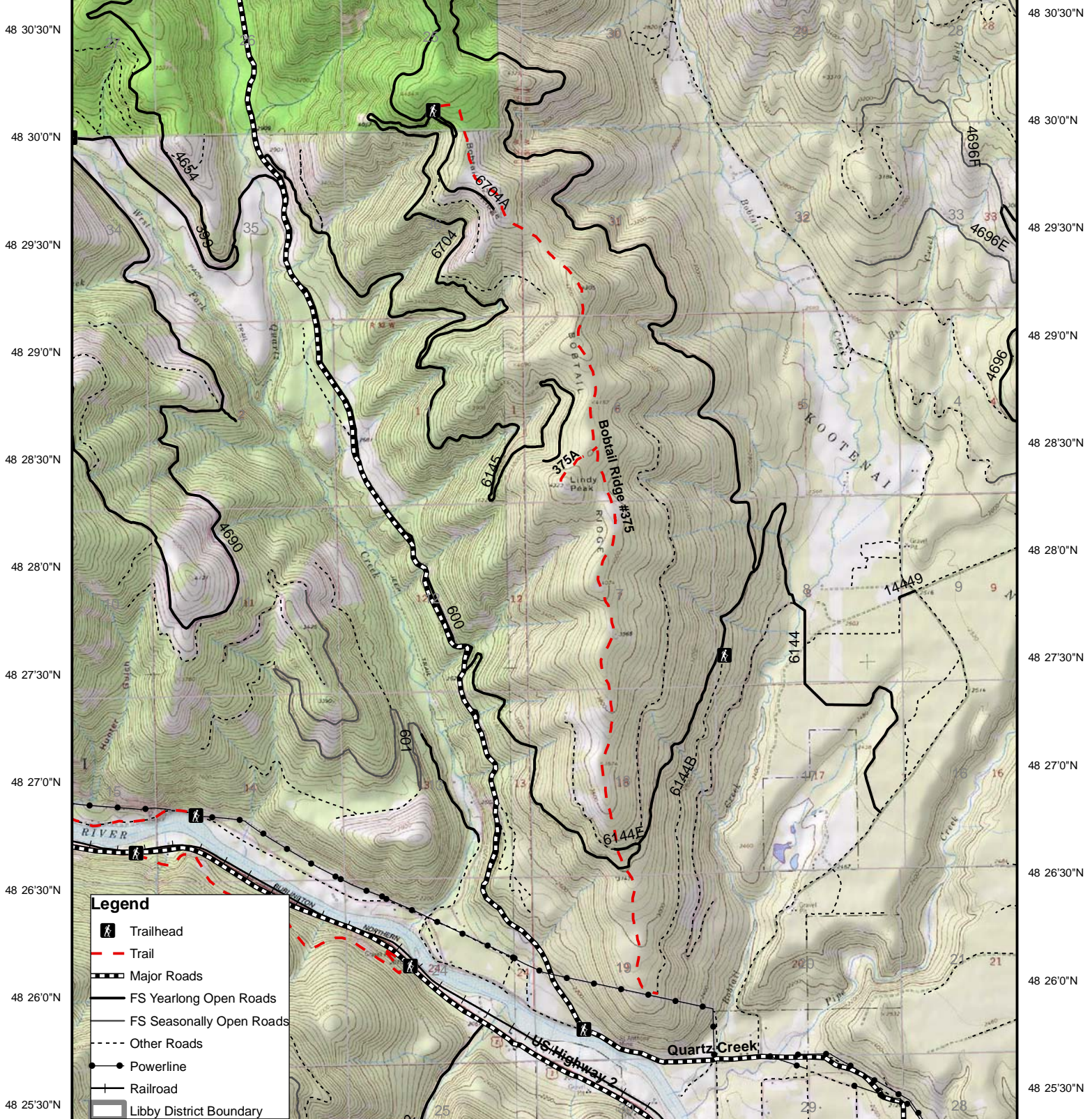


*Bobtail Ridge Vista (Dave Thorstenson Photo)*

*Prepared by Cabinet Back Country Horsemen*

# Bobtail Ridge Trail #375 & Lindy Peak #375A

115 40'30"W 115 40'0"W 115 39'30"W 115 39'0"W 115 38'30"W 115 38'0"W 115 37'30"W 115 37'0"W 115 36'30"W 115 36'0"W 115 35'30"W 115 35'0"W 115 34'30"W 115 34'0"W



115 40'30"W 115 40'0"W 115 39'30"W 115 39'0"W 115 38'30"W 115 38'0"W 115 37'30"W 115 37'0"W 115 36'30"W 115 36'0"W 115 35'30"W 115 35'0"W 115 34'30"W 115 34'0"W

