



## TRAIL DESCRIPTION

For more trail information contact:  
Kootenai National Forest  
Libby Ranger District 406-293-7773

### **Bighorn Trail # 42** **4.5 Miles**



**Recommended Season**  
All Seasons

**ACCESS:** From Libby, turn of US Highway 37 just after the bridge onto Kootenai River Road and follow for approximately 7 miles to the trailhead.

**FACILITIES:** Turn around, Parking and Vault Toilet.

**SETTING:** This trail parallels the Kootenai River with stunning views along the entire trail.

**OPPORTUNITIES:** Hiking, jogging, biking, scenery, photos, horseback riding, picnicking, dog walking, fishing & hunting

**ATTRACTIONS & CONSIDERATIONS:** This prehistoric trail follows the Kootenai River through old structures and orchards and bighorn sheep ranges. Eagles, osprey, river otters, and Harlequin ducks may be seen as well as an abundance of wildlife. This is a very popular trail and benches are located throughout the course for those wishing to contemplate with nature. The trail gets more primitive at the end, but you can hike all the way to the Swinging Bridge. Fishing along the Kootenai River is excellent, so be sure to take along a fishing pole.

**TRAIL INFORMATION:** This is an improved trail with a gravel lift and drainage and provides excellent access for hiking, jogging, dog walking and biking. Trail #42 offers an excellent family opportunity and has the highest use on Libby Ranger District. The trail is a crush surfaced road that

parallels the Kootenai River. Bighorn sheep were planted here in the 1970s and are regularly seen. The Black Eagle Rock trail leaves the main trail near the trailhead. Black Eagle Rock is a very short climbing trail that ends on top of a large rock outcropping offering a spectacular view of the Kootenai River. The trail gets fairly primitive from China Creek to Kootenai Creek; however the views of the Kootenai Falls area are incredible.

**ELEVATION:** While there are a couple of areas that the trail climbs, but the beginning at Kootenai River Road and ending elevation at China Basin are both at just over 2100 feet.

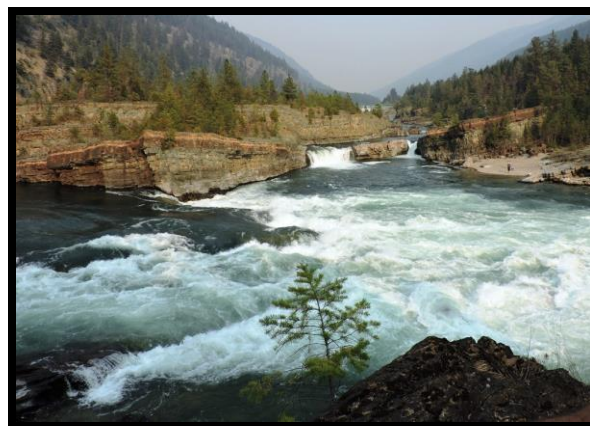
**USE:** High

**DIFFCULTY:** Easy,

**MAINTENANCE:** Yearly **Current Status** - [www.fs.usda.gov/activity/kootenai/recreation/hiking](http://www.fs.usda.gov/activity/kootenai/recreation/hiking)

**MAPS:** Forest Map, District Travel Map

**CLOSURES:** All motorized use. Dogs must be on a leash.

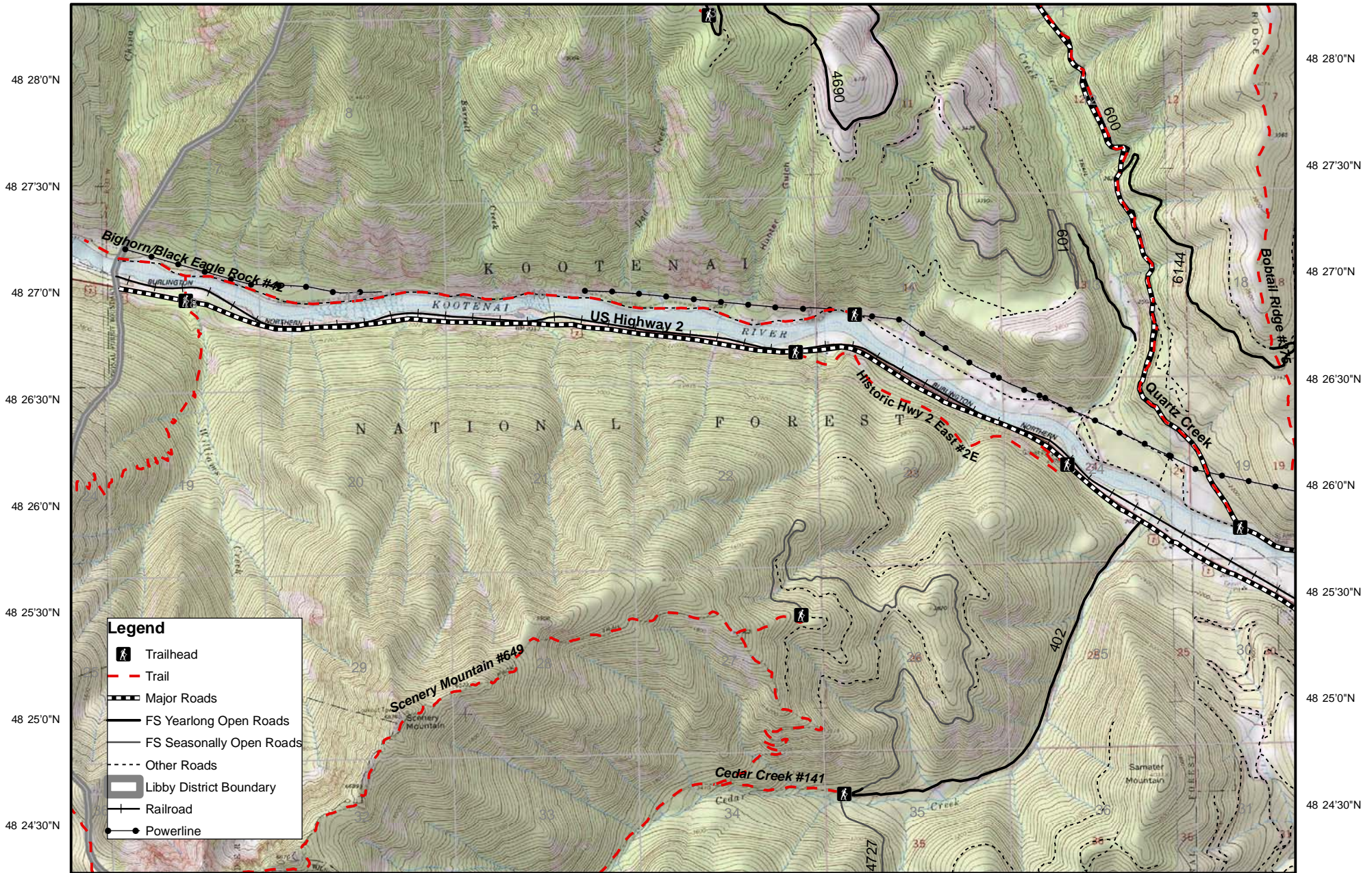


*Kootenai Falls*



# Historic Highway 2 East Trail #2E and Bighorn/Blackeagle Rock Trail #42

115 45'0"W 115 44'30"W 115 44'0"W 115 43'30"W 115 43'0"W 115 42'30"W 115 42'0"W 115 41'30"W 115 41'0"W 115 40'30"W 115 40'0"W 115 39'30"W 115 39'0"W 115 38'30"W 115 38'0"W 115 37'30"W 115 37'0"W



115 45'0"W 115 44'30"W 115 44'0"W 115 43'30"W 115 43'0"W 115 42'30"W 115 42'0"W 115 41'30"W 115 41'0"W 115 40'30"W 115 40'0"W 115 39'30"W 115 39'0"W 115 38'30"W 115 38'0"W 115 37'30"W 115 37'0"W

