

TRAIL DESCRIPTION

For more trail information contact:
Kootenai National Forest
Libby Ranger District 406-293-7773



Bear Lakes Trail # 178 2.8 Miles

Recommended Season
Summer Fall

ACCESS: From Libby, head south on US Highway 2 for 28 miles and take the Silver Butte Road on the right. Proceed up Silver Butte for 9.4 miles to the trailhead.

FACILITIES: None. The trailhead does offer good parking for stock.

SETTING: Closed forest canopy with primarily small lodgepole pine stands in the lower sections, mixed conifer towards the lower lake and opens in to rocky subalpine after the trail connects to the Cutoff Trail # 63.

OPPORTUNITIES: Hiking, viewing scenery, horseback riding, hunting, huckleberry picking and fishing.

ATTRACTIONS & CONSIDERATIONS: Provides access to Bear Lakes. The main trail does not go down to the lakes, but there is a spur trail that takes you to the middle Lake. Once you pass Bear Lakes, the scenery is stunning with views into the South Cabinets.

Consider the Barea/Bear Lakes loop for a 10 mile round trip.

TRAIL INFORMATION: This is a fairly steep trail the entire distance but the first mile is the worst with lots of roots and washing in the trail. Trail conditions improve just before the Bear Lakes as the grade lessens. Connect with the Cutoff Trail #63 to the Cabinet Divide Trail.

There are some large boulder scree areas between Bear Lakes Trail and the Divide that can be hazardous for stock. This is grizzly bear country so take your bear spray.

ELEVATION: Beginning at 3600' at the Silver Butte Road and ending at 5900' on the ridge between the Middle and Lower Bear Lakes.

USE: Moderate

DIFFICULTY: Moderate/Difficult

MAINTENANCE: Yearly **Current Status** - www.fs.usda.gov/activity/kootenai/recreation/hiking

MAPS: Forest Map, District Travel Map

CLOSURES: All motorized use. Stock not allowed within 200' of Lakes



Bear Lakes (Photo by Dave Thorstenson)



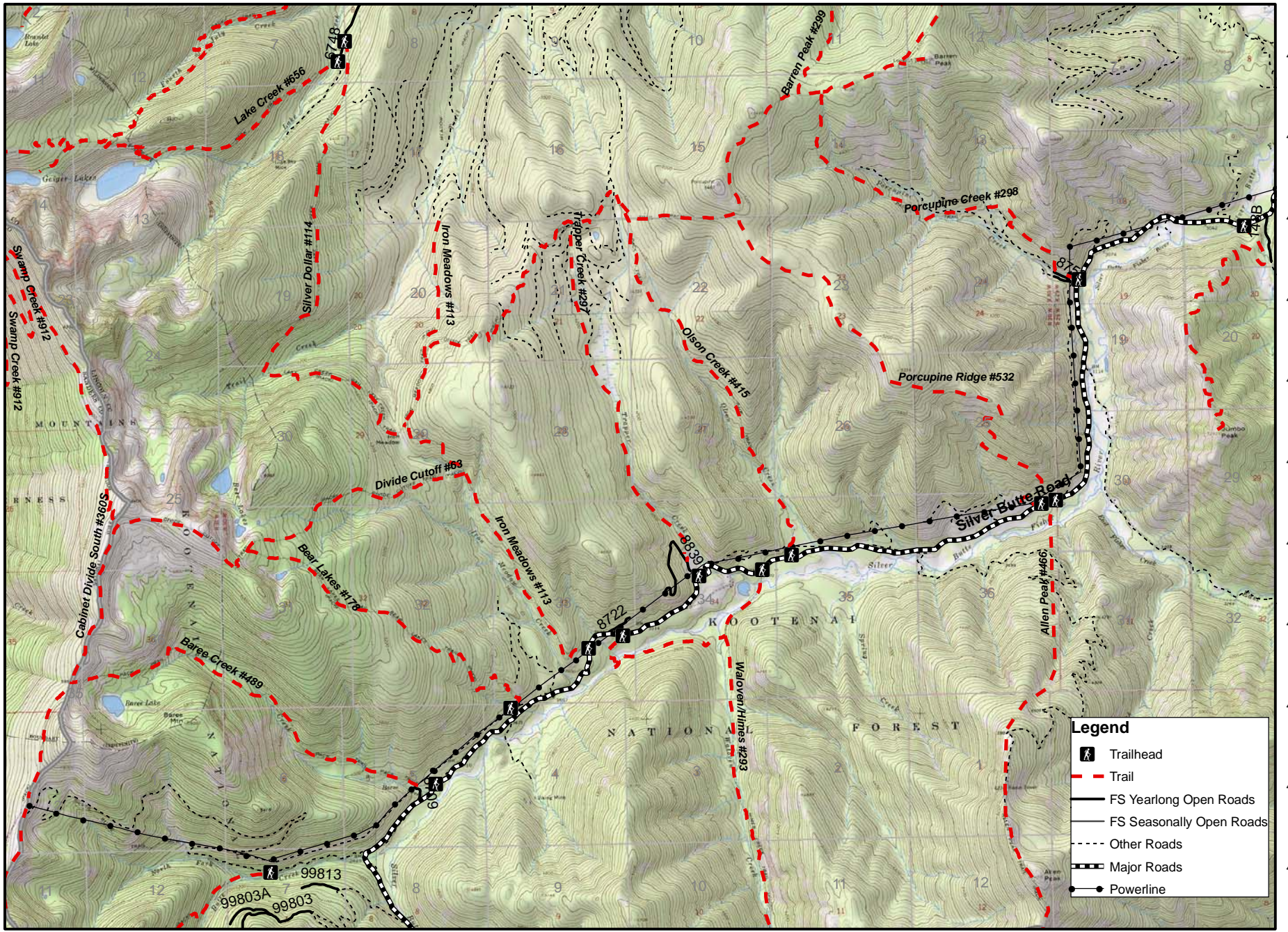
Bear Lakes Basin (Photo by Deena Shotzberger)

Silver Butte North Trails

115 33°0'W 115 32°0'W 115 31°0'W 115 30°0'W 115 29°0'W 115 28°0'W 115 27°0'W 115 26°0'W 115 25°0'W 115 24°0'W 115 23°0'W 115 22°0'W

48 1°30'N
48 1°0'N
48 0°30'N
48 0°0'N
47 59°30'N
47 59°0'N
47 58°30'N
47 58°0'N
47 57°30'N
47 57°0'N
47 56°30'N

48 1°30'N
48 1°0'N
48 0°30'N
48 0°0'N
47 59°30'N
47 59°0'N
47 58°30'N
47 58°0'N
47 57°30'N
47 57°0'N
47 56°30'N



Legend

- Trailhead
- Trail
- FS Yearlong Open Roads
- FS Seasonally Open Roads
- Other Roads
- Major Roads
- Powerline

115 33°0'W 115 32°0'W 115 31°0'W 115 30°0'W 115 29°0'W 115 28°0'W 115 27°0'W 115 26°0'W 115 25°0'W 115 24°0'W 115 23°0'W 115 22°0'W

