

TRAIL DESCRIPTION

For more trail information contact:
Kootenai National Forest
Libby Ranger District 406-293-7773



Baree Creek # 489 **3.28 Miles**

Recommended Season
Summer Fall

ACCESS: From Libby, travel 28 miles South on US Highway 2. Turn right (southwest) onto the Silver Butte Road # 148 and continue 10.3 miles to the trailhead. Turn right (north) and drive under powerline.

Trail accesses Baree Lake and the Cabinet Divide Trail # 360. This trail offers several loop opportunities, including the popular Baree/Bear Lakes loop for a 10 mile round trip.

FACILITIES: None but there is adequate trailer turnaround and parking.

SETTING: The majority of the trail parallels Baree Creek and consists of a mosaic of conifer forest and rocky openings. Nice views of the Cabinet Mountain Wilderness once you get to the divide.

OPPORTUNITIES: Hiking, fishing, viewing scenery, horseback riding, berry picking, hunting, and snowshoeing.

ATTRACTIONS & CONSIDERATIONS: The Baree Creek trail provides access to the Cabinet Mountain Wilderness, the Cabinet Divide Trail # 360 and Baree Lake. This trail would be a nice family day hike or overnight backpack trip. The trail has limited use for snowshoeing in the winter.

Special attractions include a scenic falls one mile up from the trailhead; scenic views into Baree Creek beginning at about 2 miles; and Baree Lake at approximately 3 miles. The junction of the Baree Trail and the Cabinet Divide Trail has excellent views into Silver Butte drainage, and Baree Lake to the east and Swamp Creek drainage to the west.

For explorer's and history buffs, there are remnants of a small old log cabin just southeast of the lake and foundation just north of the lake. The adventurous can hike the ridge for another 1.5 miles to Baree Mountain for stunning views.

During late July and August there is generally good huckleberry picking in this area. This is bear country so bring your bear spray.

TRAIL INFORMATION:

The portion of the trail just past the bridge can be wet and boggy, and there is an area just past the second crossing (2.3 miles) that is difficult for horses due to a section of polished slab rock and scree.

ELEVATION: Beginning at 3800' at the Silver Butte Road and ending at 5500 feet at Baree Lake or 5950 at the Divide.

USE: Moderate

DIFFCULTY: Moderate

MAINTENANCE: Yearly **Current Status** - www.fs.usda.gov/activity/kootenai/recreation/hiking

MAPS: Forest Map, District Travel Map

CLOSURES: All motorized use. Stock not allowed within 200' of Lakes.



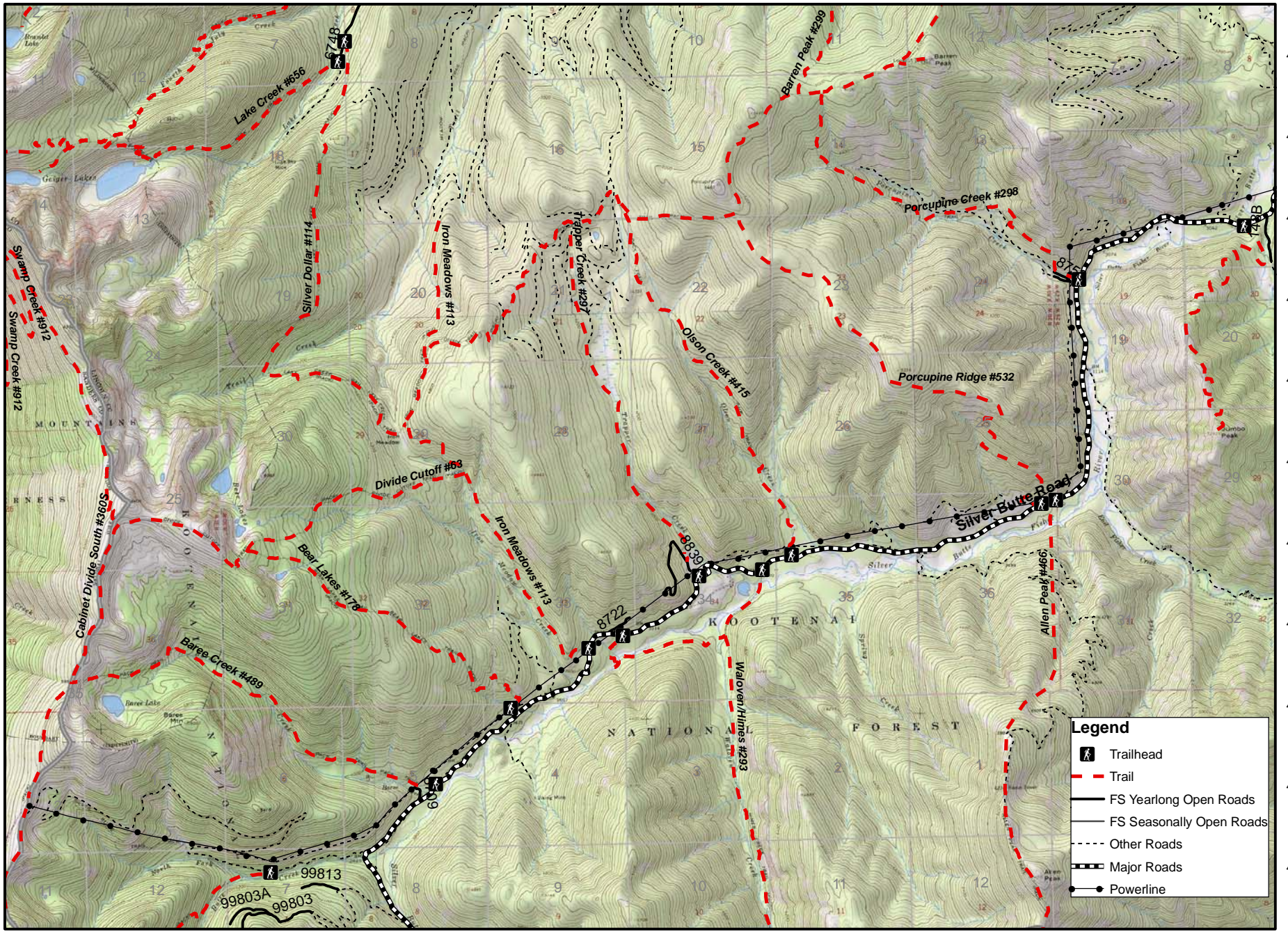
North Shore Baree Lake

Silver Butte North Trails

115 33°0'W 115 32°0'W 115 31°0'W 115 30°0'W 115 29°0'W 115 28°0'W 115 27°0'W 115 26°0'W 115 25°0'W 115 24°0'W 115 23°0'W 115 22°0'W

48 1°30'N
48 1°0'N
48 0°30'N
48 0°0'N
47 59°30'N
47 59°0'N
47 58°30'N
47 58°0'N
47 57°30'N
47 57°0'N
47 56°30'N

48 1°30'N
48 1°0'N
48 0°30'N
48 0°0'N
47 59°30'N
47 59°0'N
47 58°30'N
47 58°0'N
47 57°30'N
47 57°0'N
47 56°30'N



Legend

- Trailhead
- Trail
- FS Yearlong Open Roads
- FS Seasonally Open Roads
- Other Roads
- Major Roads
- Powerline

115 33°0'W 115 32°0'W 115 31°0'W 115 30°0'W 115 29°0'W 115 28°0'W 115 27°0'W 115 26°0'W 115 25°0'W 115 24°0'W 115 23°0'W 115 22°0'W

