



TRAIL DESCRIPTION

For more trail information contact:
Kootenai National Forest
Libby Ranger District 406-293-7773



Allen Peak Trail # 466 4.7 Miles

Recommended Season
Summer Fall

ACCESS: From Libby, head south on US Highway 2 for 28 miles and take the Silver Butte Road. Proceed up Silver Butte for 5 miles to the trailhead on the left.

FACILITIES: None.

SETTING: Closed canopy forest for about 2.7 miles until the trail reaches the spur ridge at about 6000 feet. The next 2 miles are mixed and open forest along the ridge.

OPPORTUNITIES: Hiking, viewing scenery, horseback riding, and hunting.

ATTRACTIONS & CONSIDERATIONS: The main attraction for this trail is access to Allen Peak, the Waloven/Himes Trail, the Vermilion Fisher River Divide, spectacular scenery, hunting and trail loop opportunities. This trail joins the Himes Waloven Trail less than one mile south of Allen Peak, and offers loop opportunities to Waloven Creek to the west and Himes Creek and the East Fisher Road to the East.

Allen Peak offers stunning views of the Cabinet Divide, Silver Butte and East Fisher drainages, and Jumbo and Owl Peaks.

TRAIL INFORMATION: After about ¼ mile the trail crosses Silver Butte Fisher River. This can be a difficult crossing for hikers in late spring and early summer. After the crossing, this is a very steep climb that gains almost 3000 feet in about 2.7 miles. Elevation gain the next 1.2 miles is about 1000 feet and the last .8 miles drops about 1000 feet to the junction of the Waloven/Himes Trail #293. The trail follows and crosses Road #2301 several times before reaching the top of Allen Peak.

Many recreationists choose to use the #2301 road for access to Allen Peak instead of the trail. The road adds an additional 2+ miles if you take it from the first switchback.

This trail has not been maintained for several years, and when maintained it is only sporadic, so expect significant down fall, and washing on the steeper sections. You may have some difficulty following the trail along the upper ridge due to lack of tread in the open areas, but it's a narrow ridge so it is not difficult to stay on the ridge.

The 40 acres with communication equipment is privately owned, so be considerate as you pass through this area.

ELEVATION: Beginning at 3200 at the Silver Butte Road and ending at 5840 at Himes Pass. Elevation at the Radio Tower is 6230' and Allen Peak is 6740'

USE: Low

DIFFCULTY: Difficult

MAINTENANCE: Sporadic. **Current Status -**
www.fs.usda.gov/activity/kootenai/recreation/hiking

MAPS: Forest Map, District Travel Map

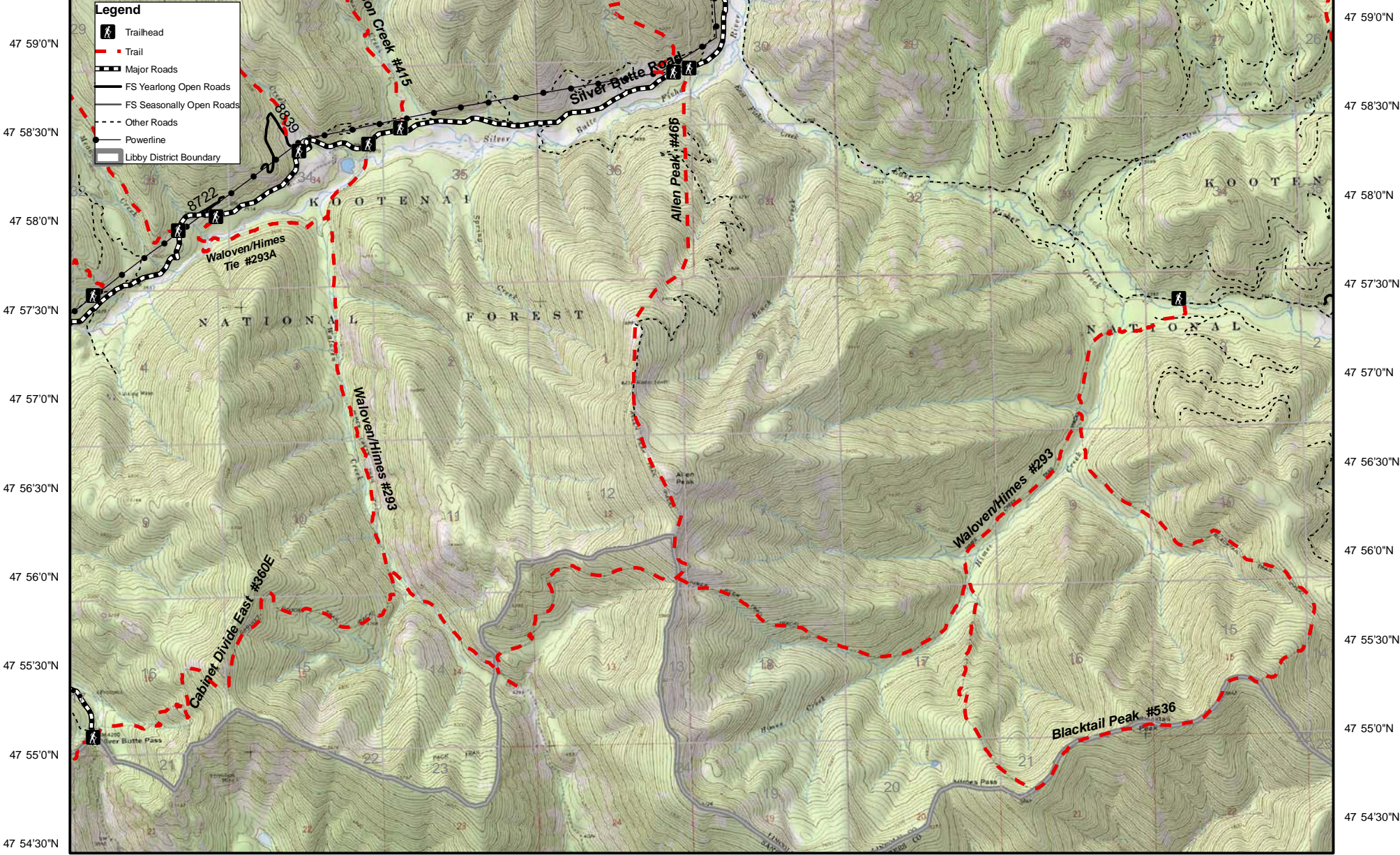
CLOSURES: All motorized use



Allen Peak

Allen Peak Trail #466, Waloven/Himes #293, Blacktail Loop 536

115 28'30"W 115 27'30"W 115 26'30"W 115 25'30"W 115 24'30"W 115 23'30"W 115 22'30"W 115 21'30"W 115 20'30"W 115 19'30"W 115 18'30"W



Legend

- Trailhead
- Trail
- Major Roads
- FS Yearlong Open Roads
- FS Seasonally Open Roads
- Other Roads
- Powerline
- Libby District Boundary

