

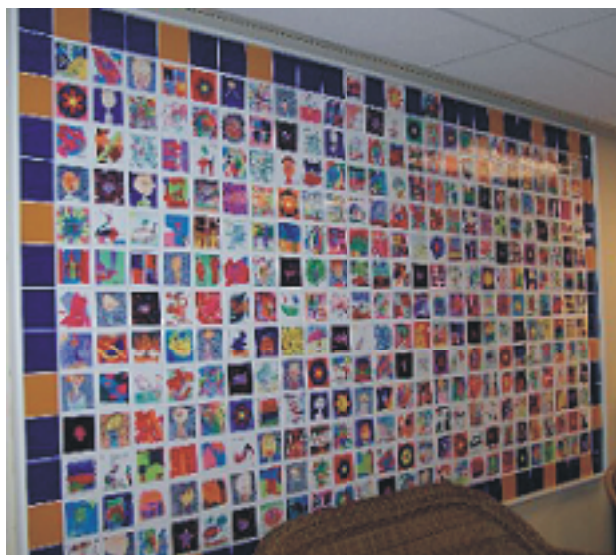


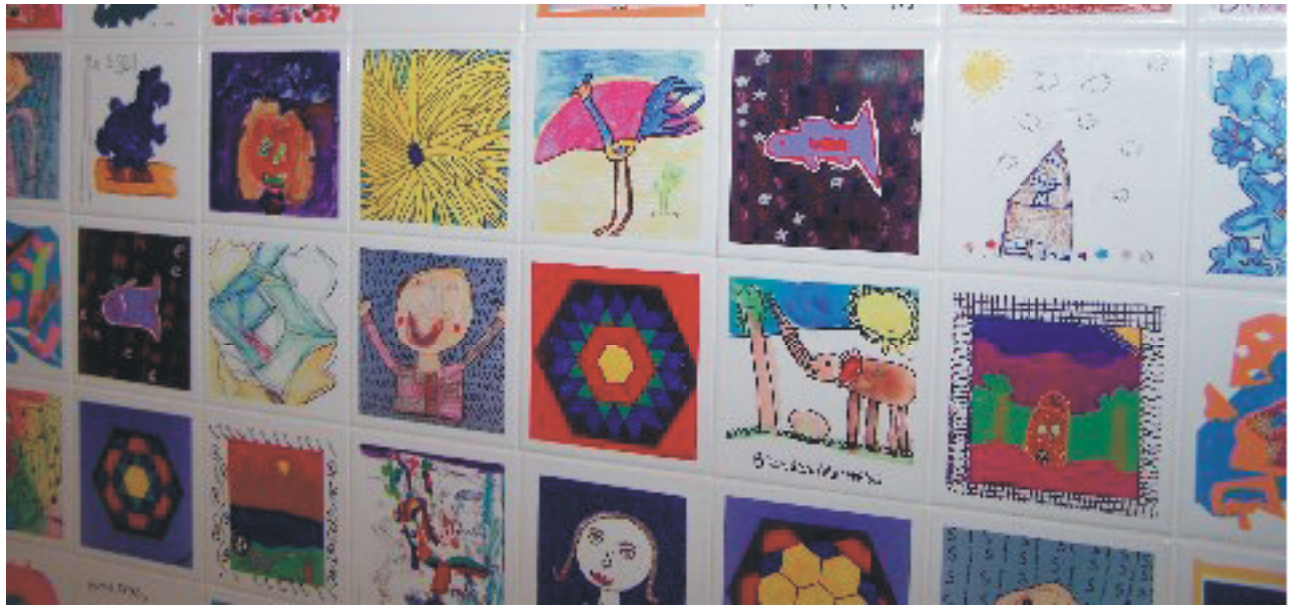
Join Our Wall of Tiles

- ♥ Use whatever medium you like - crayons, markers, pencils, paints.
- ♥ If you can't do it, ask your kid, grandkid, neighbor, friend.
- ♥ You can put a border on the tile or you can leave it without a border.
- ♥ It must be square & it must be on a white background. Up to 7" square - we'll reduce it.
- ♥ If you have something already done, submit it - we'll see if we can use it.
- ♥ It could be computer generated, square, and as a .pdf file - sorry no photos.
- ♥ Please turn in as quickly as you can.
- ♥ If you have questions call Marge at 293-5039.

This is a fund raiser for our building fund. When we build a new shelter our wall will look similar to this.

\$50 per tile.
\$100 business logo/business card





Samples - make a design, have your child draw a picture, sign your name, names of your pets, it's up to you! Feel free to go for it! Share your designs.

Join the wall of friends at the Kootenai Pets for Life Shelter.

Please try to find a drawing but if you sign only we put in on a heart (sign on white square - we will add heart)

